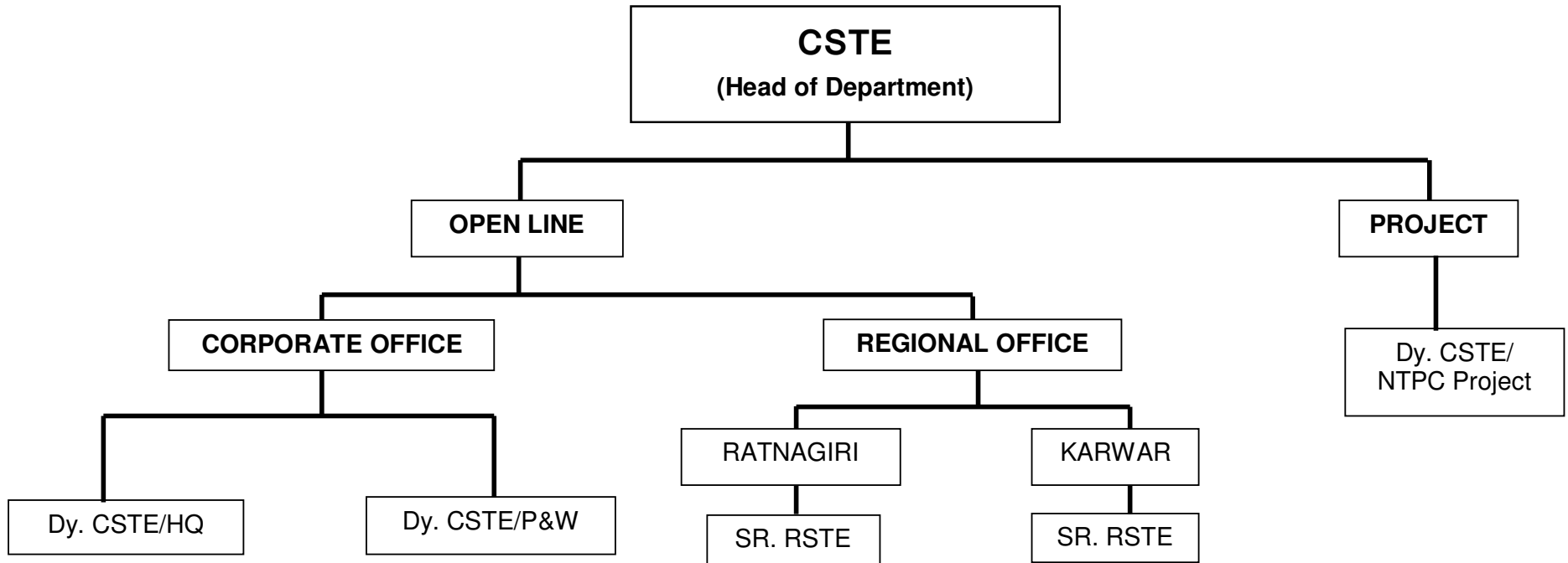


SIGNAL & TELECOMMUNICATION DEPARTMENT



CSTE: Chief Signal & Telecommunication Engineer.
Dy. CSTE (P&W): Deputy Chief Signal & Telecommunication Engineer (Planning & Works)
Dy. CSTE (HQ): Deputy Chief Signal & Telecommunication Engineer (Headquarters)
Dy. CSTE/NTPC Project: Deputy Chief Signal & Telecommunication Engineer/ NTPC Project.
SR. RSTE: Senior Regional Signal & Telecommunication Engineer.