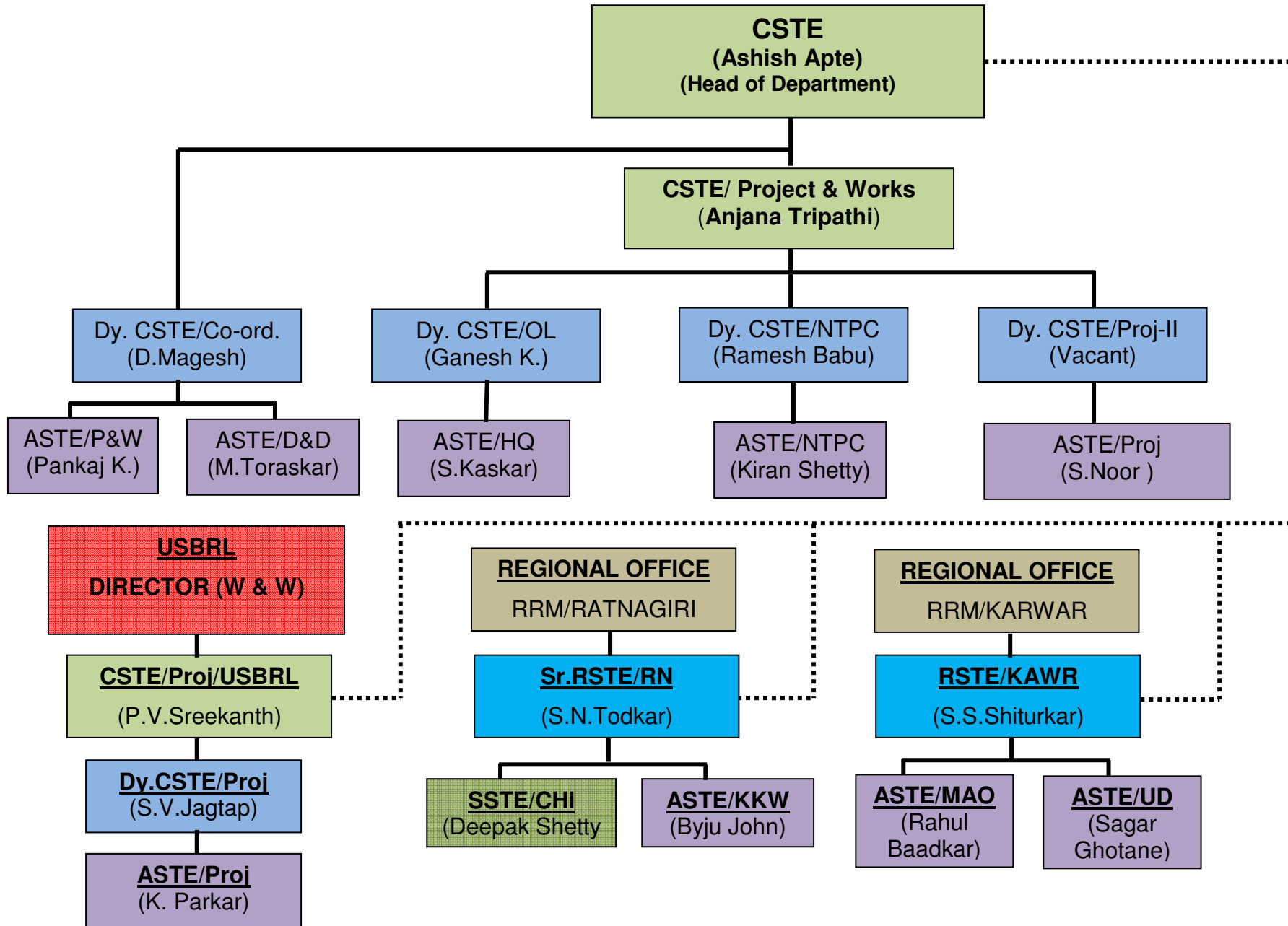


**SIGNAL & TELECOMMUNICATION DEPARTMENT**



CSTE: Chief Signal & Telecommunication Engineer.

CSTE (P&W): Chief Signal & Telecommunication Engineer/ (Project & Works)

Dy. CSTE (Co-ord.): Deputy Chief Signal & Telecommunication Engineer (Co-ordination)

Dy. CSTE (OL): Deputy Chief Signal & Telecommunication Engineer (Open Line)

Dy. CSTE/NTPC : Deputy Chief Signal & Telecommunication Engineer/ NTPC.

Dy. CSTE/Proj-II : Deputy Chief Signal & Telecommunication Engineer/ Project-II

Sr. RSTE: Senior Regional Signal & Telecommunication Engineer.

RSTE : Regional Signal & Telecommunication Engineer