

Photo Gallery

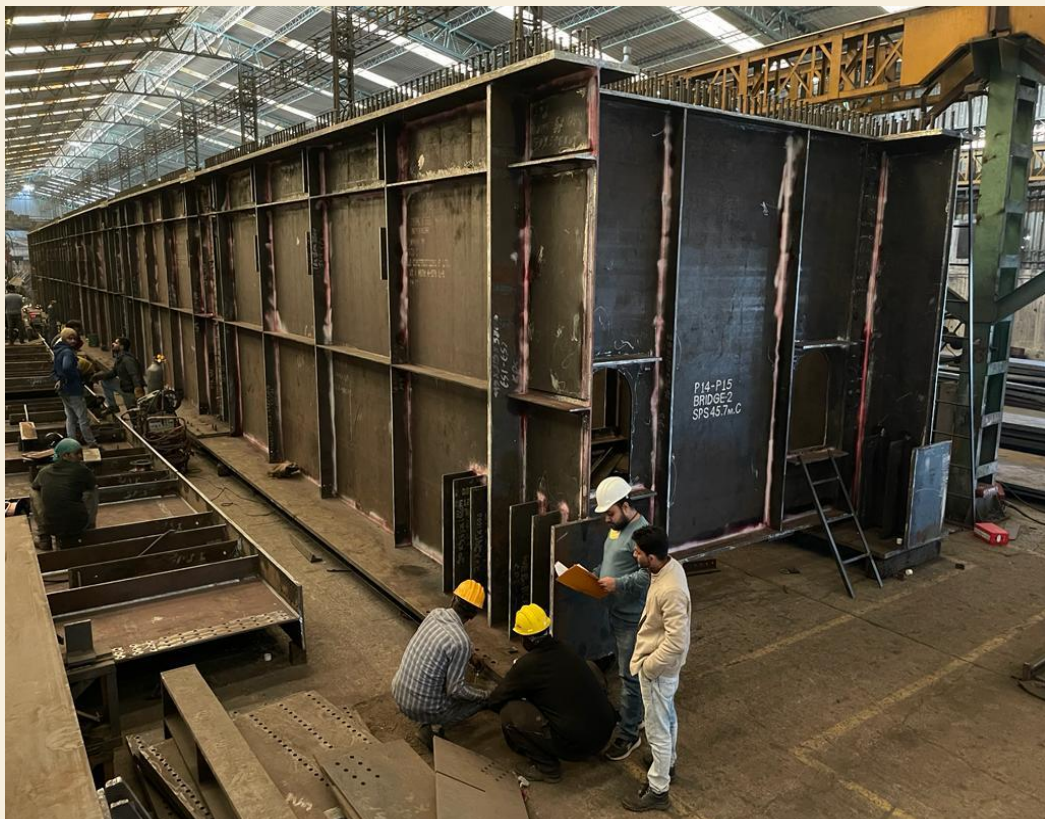


Fig 1: Trial Assembly Inspection of 45.7m Bridge span for RVNL Bhanupalli- Bilaspur-Beri New Rail Line



Fig 2: Launching for Span 30.5 m Straight at Bridge-4, RVNL BBB Project, supervised by KRCL Engineers.



Fig 3: Assembly at RVNL Chandigarh BBB Bridge site



Fig 4: Launching in progress for ROB SMC Project- Saroli



Fig 5: Inspection of Painted Girders



Fig 6: Inspection of Spherical Bearings at M/s Mageba Kolkata for RVNL BBB Project.



Fig 7: Trial Assembly for FOB Central Railway Daund Manmad Doubling project



Fig 8: Inspection of Welding for ROB over SEC Railway.



Fig 9: Inspection of Spherical Bearings at M/s Mageba, Kolkata by CPM RVNL & PD RVNL BBB



Fig 10: Inspection of Fabrication works for RVNL Bhanupalli- Bilaspur-Beri New Rail Line at M/s HMM Ambala.



Fig 11: Ultrasonic Testing of Structural Steel Plates in progress



Fig 12: Inspection of Fabrication Works for MMRDA Project at M/s IGPL, Pune



Fig 13: 1X115m span Truss Girder for NHAI Delhi Meerut Expressway Package-II (Completed)



Fig 14: 1x14m FOB at for NTPC Kudgi, Karnataka



Fig 15: 1x29.54m FOB at for NTPC Kudgi, Karnataka
