



KONKAN RAILWAY CORPORATION LIMITED

PHOTO GALLERY

**Udhampur-Srinagar-Baramulla-Rail Link
Project**

Updated on 31-08-2025

ROADS

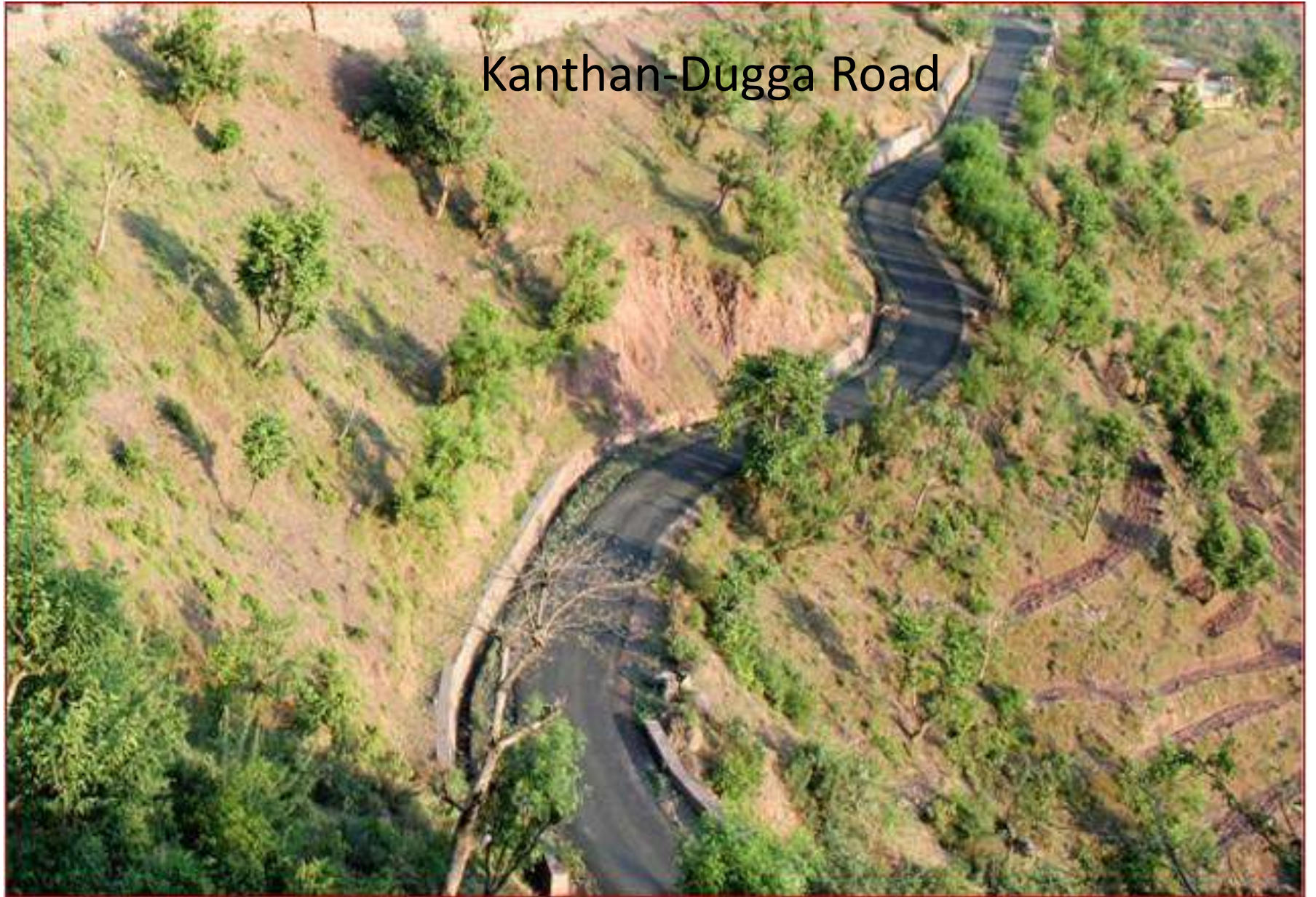
Road at Judda Village



Road at Sangaldan



Kanthan-Dugga Road





[Ind-Adit T14 Approach Road](#)



Ind-Adit T14 Approach Road

BRIDGE 39

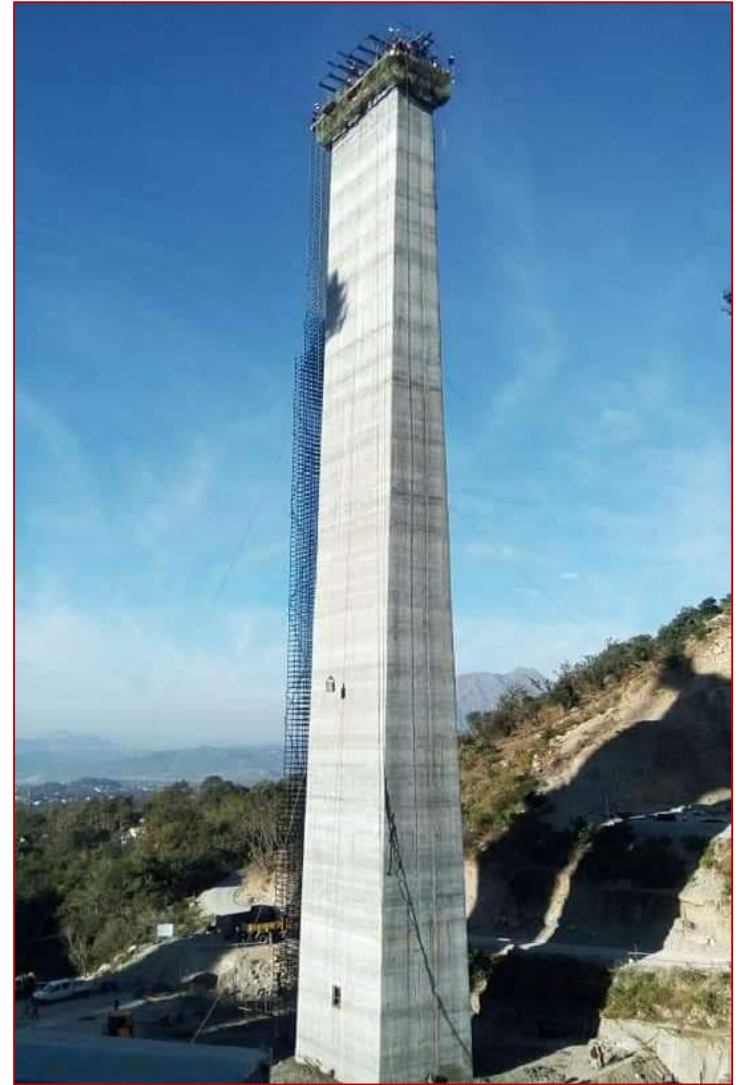
A view of Bridge 39



Bridge 39



The pier no. P-5 of Br.no.39 is 91 m tall.



Bridge 39



Bridge 39



Bridge 39



Bridge 39



BRIDGE 43

A view of Bridge 43



Bridge 43



Bridge 43



Bridge 43



Bridge 43



Bridge 60



CHENAB BRIDGE

❖ An Artistic view of Proposed Chenab Bridge



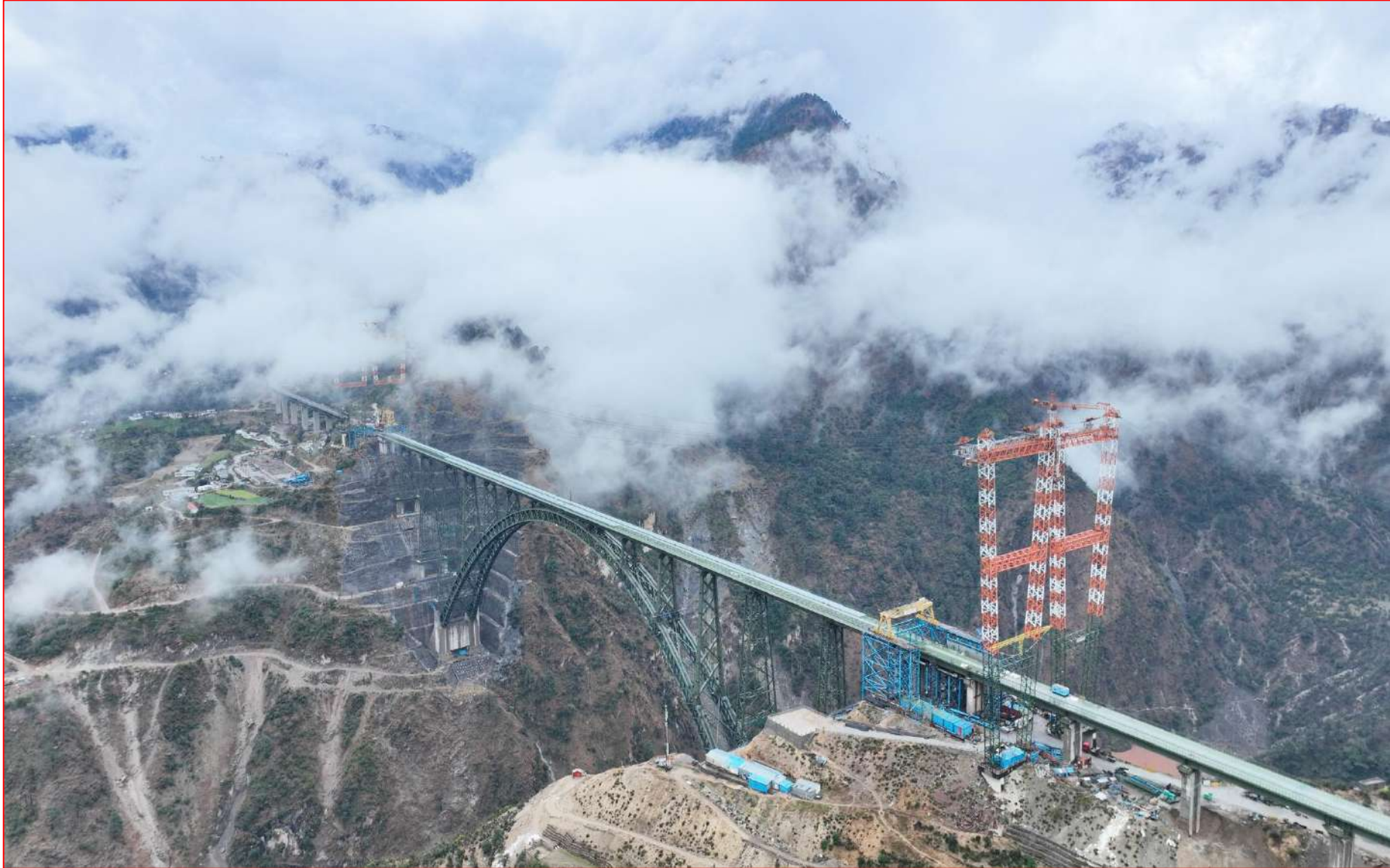
A VIEW OF CHENAB BRIDGE



A VIEW OF CHENAB BRIDGE



A VIEW OF CHENAB BRIDGE



A VIEW OF CHENAB BRIDGE



A VIEW OF CHENAB BRIDGE



A VIEW OF CHENAB BRIDGE



A VIEW OF CHENAB BRIDGE



A VIEW OF CHENAB BRIDGE



A VIEW OF CHENAB BRIDGE



Chenab Bridge



Bird's View Of Chenab Bridge



A View Of Chenab Bridge

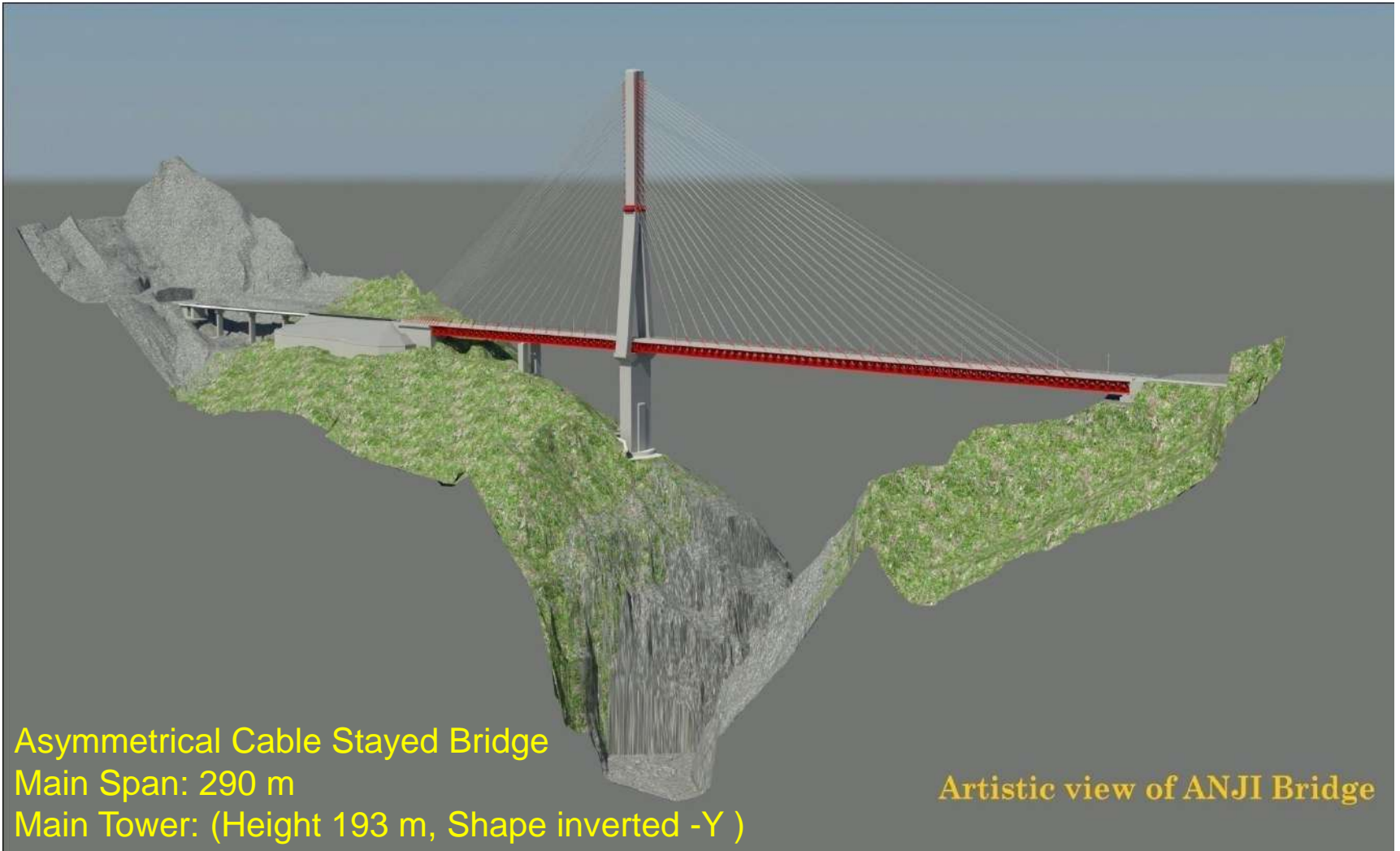


A View Of Chenab Bridge



ANJI BRIDGE

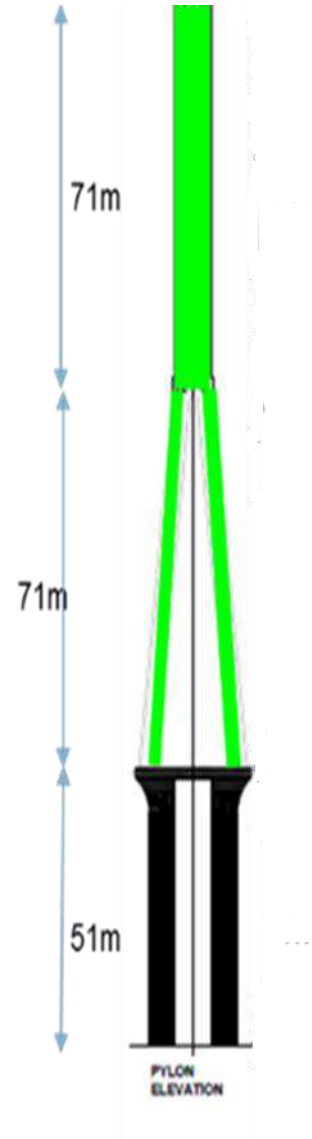
Artistic View of Anji Bridge



Asymmetrical Cable Stayed Bridge
Main Span: 290 m
Main Tower: (Height 193 m, Shape inverted -Y)

Artistic view of ANJI Bridge

Anji Bridge- Current Status Of Main Pylon-MP1



Anji Bridge



Anji Bridge



Anji Bridge



Anji Bridge



Anji Bridge



Anji Bridge



Anji Bridge



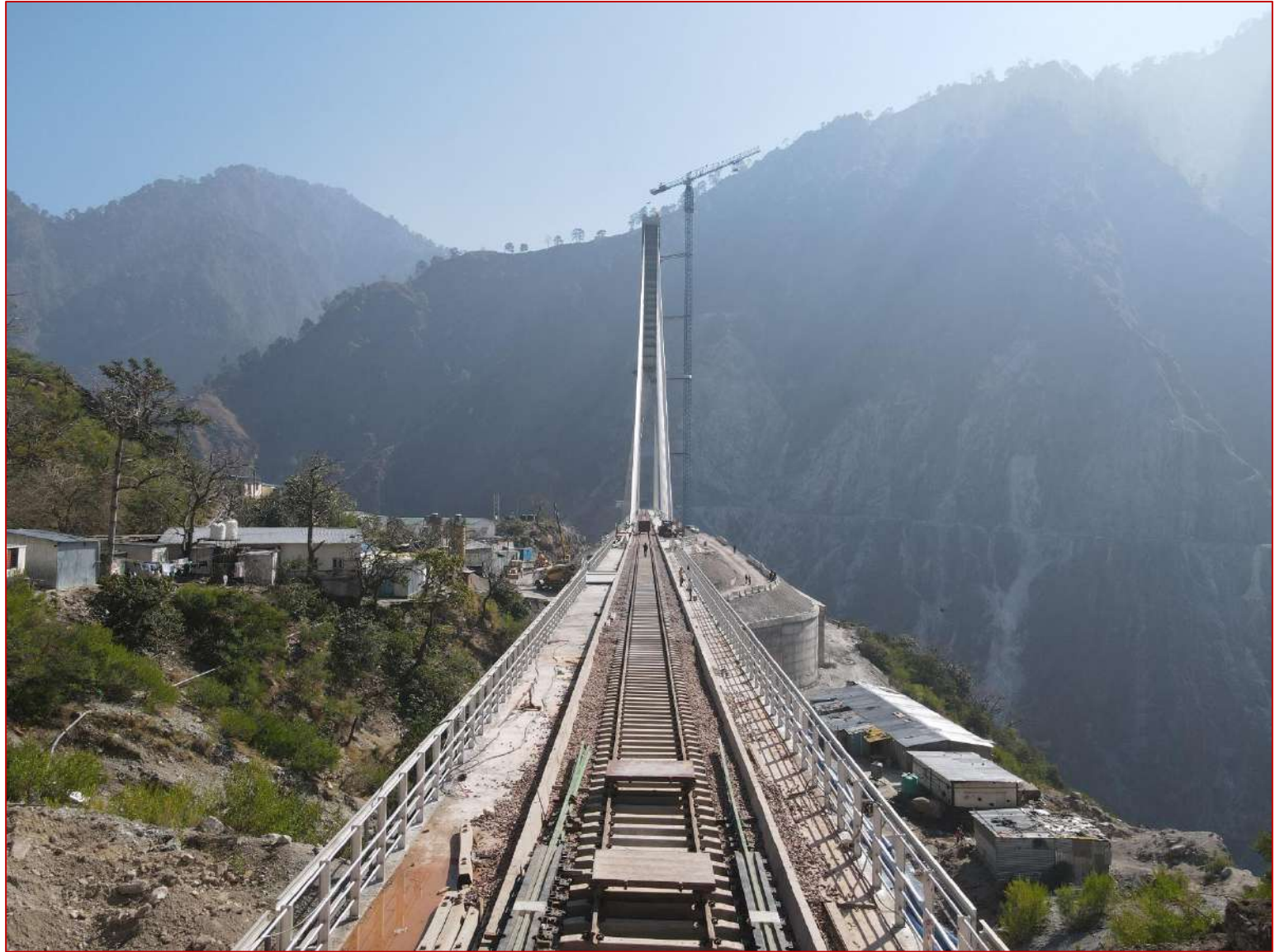
Anji Bridge



Anji Bridge



Anji Bridge



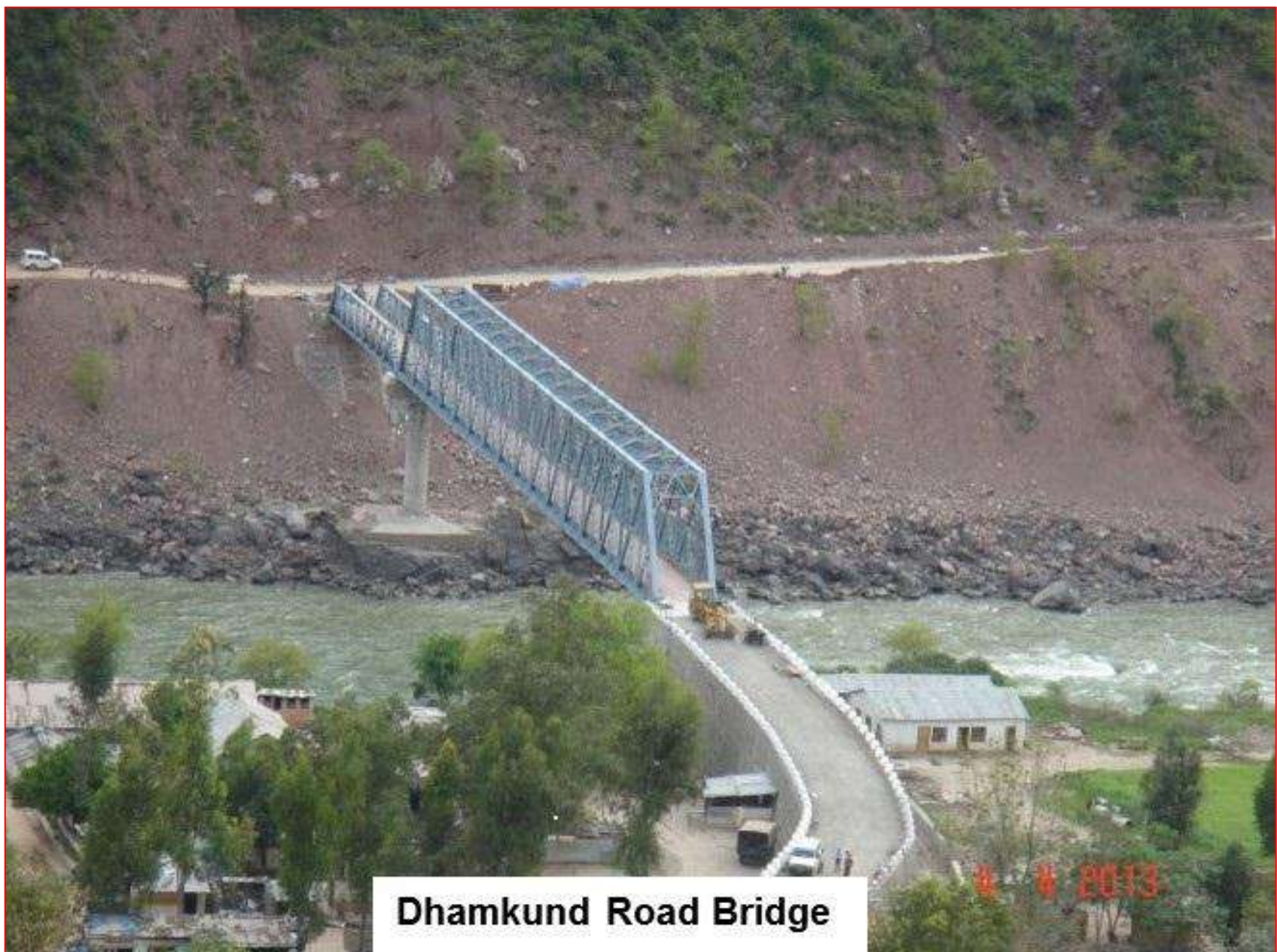
Anji Bridge



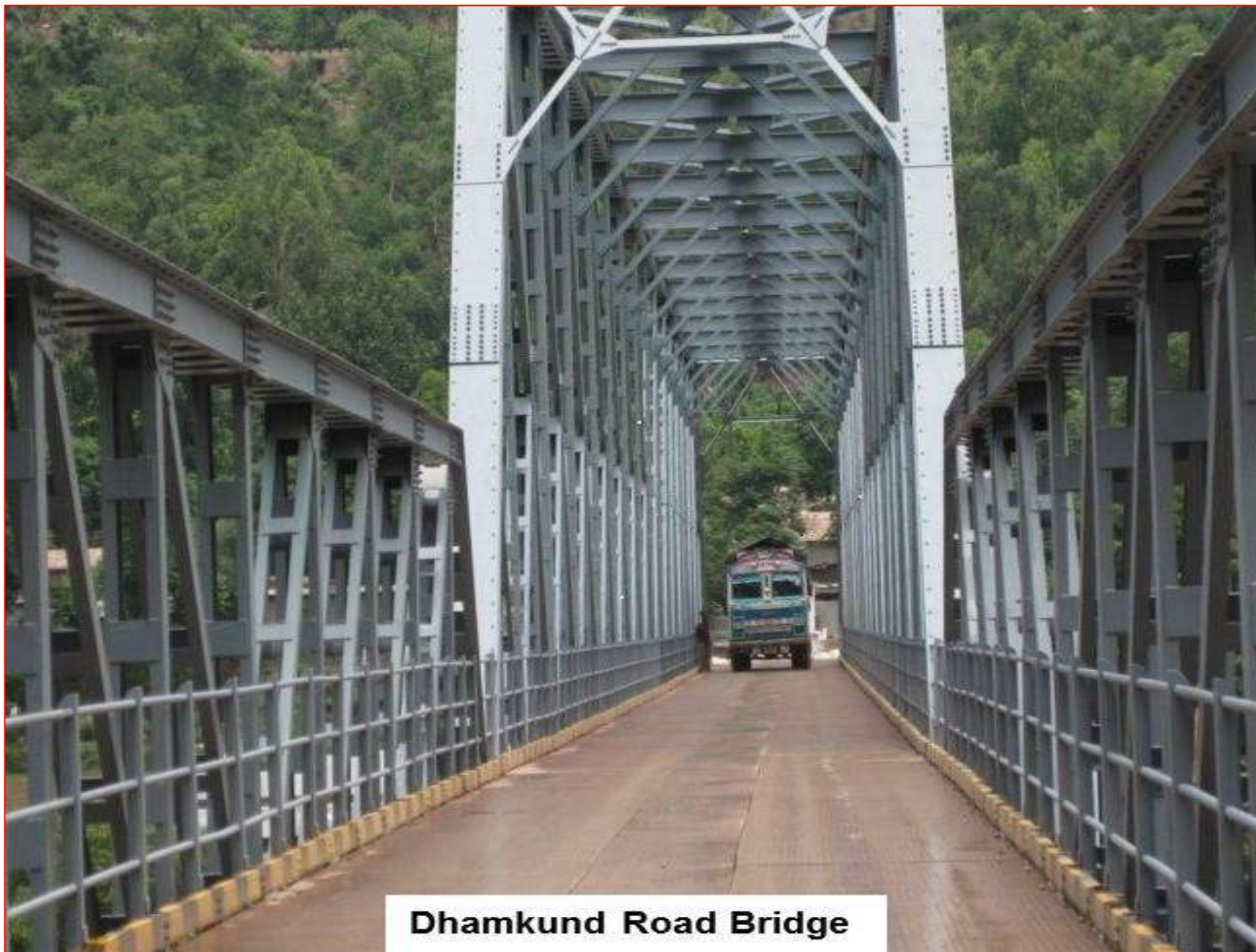
Anji Bridge



DHAMKUND BRIDGE



Dhamkund Road Bridge



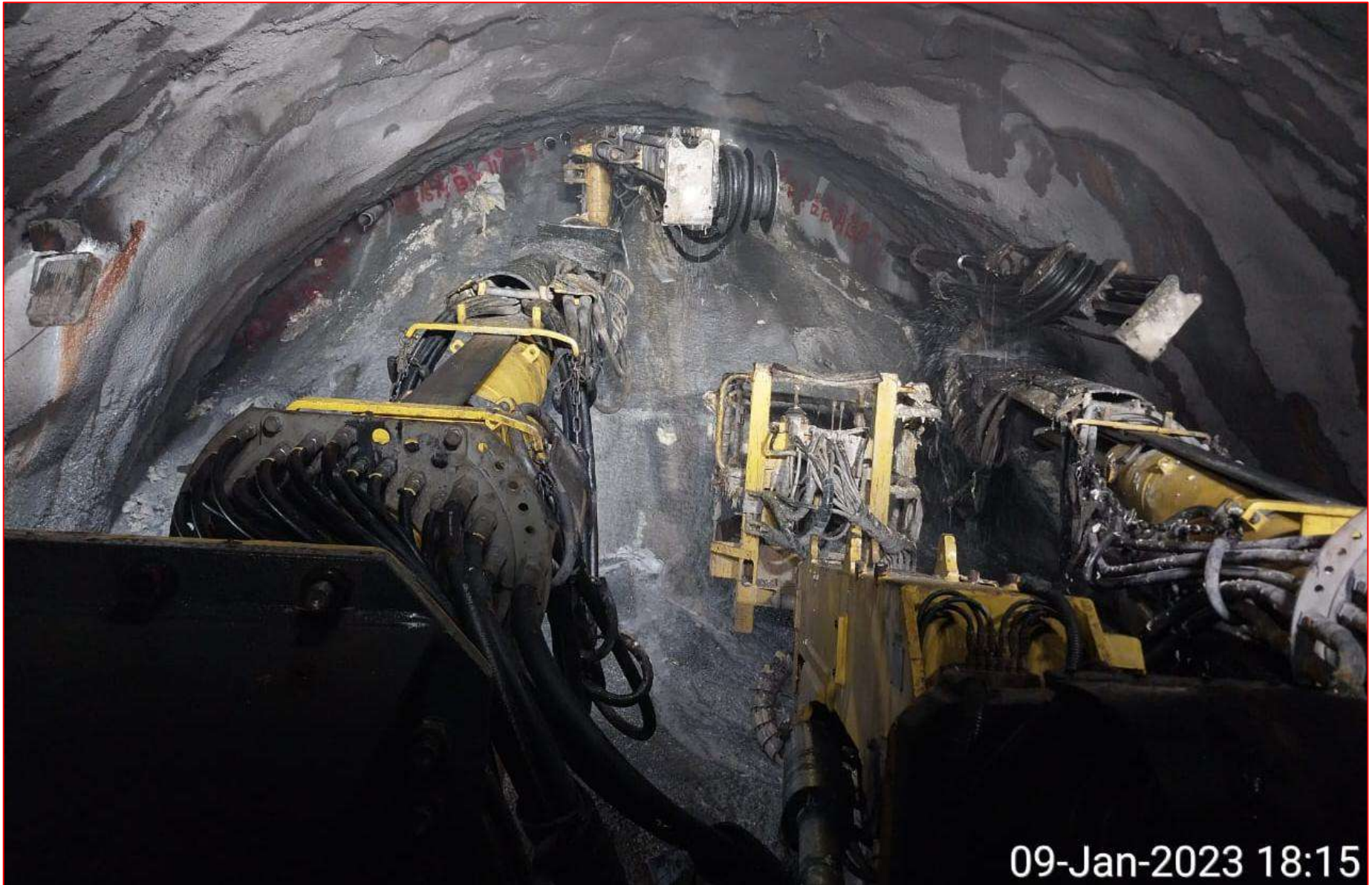
Dhamkund Road Bridge

TUNNELS

Tunnel T1 – P1 End



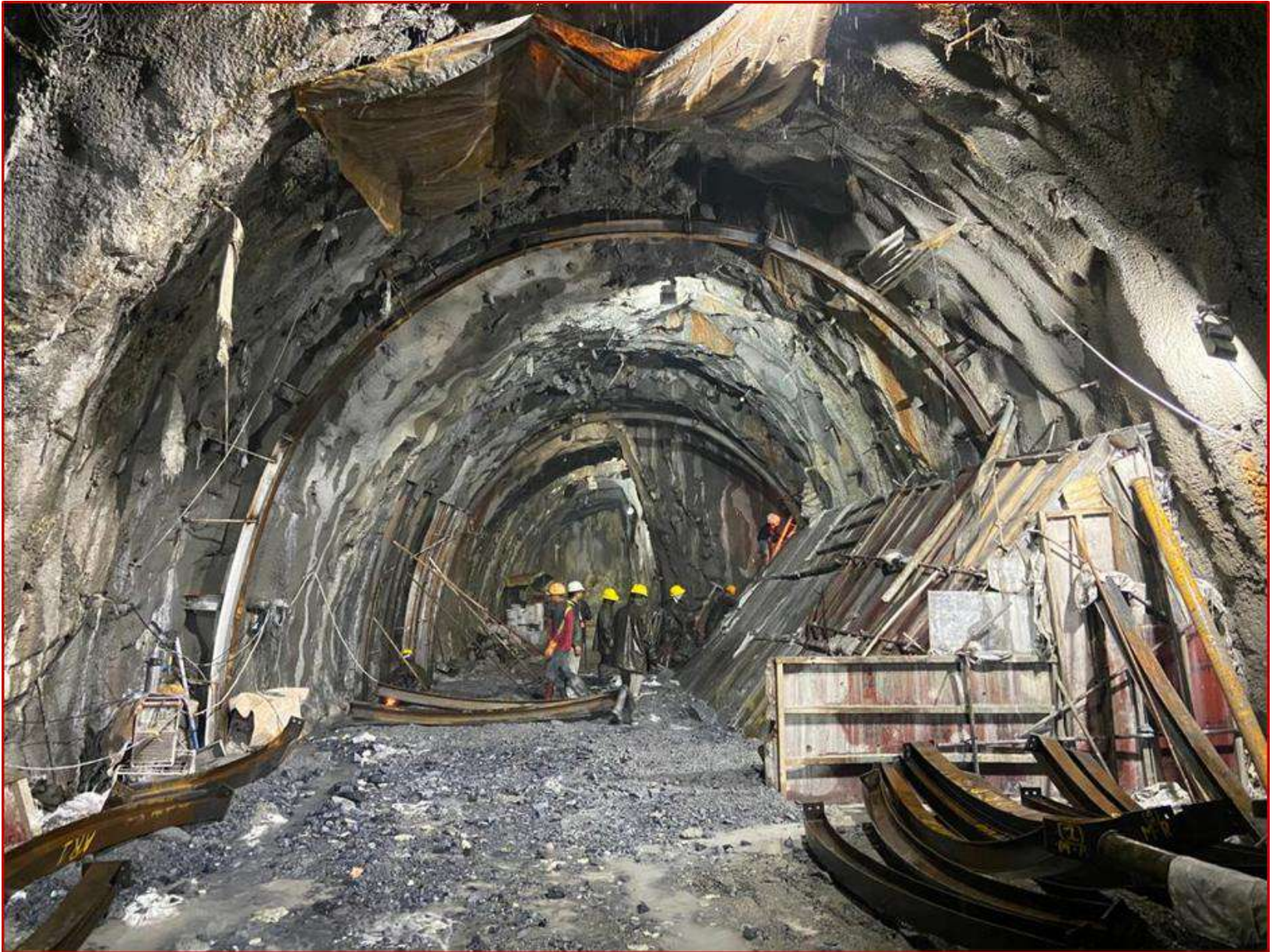
Tunnel T1 – P1 End



Tunnel T1 – P2 End



Tunnel T1 – P2 End



Tunnel T2



Tunnel T2 (Main Tunnel) - Pipe roofing



Tunnel T2



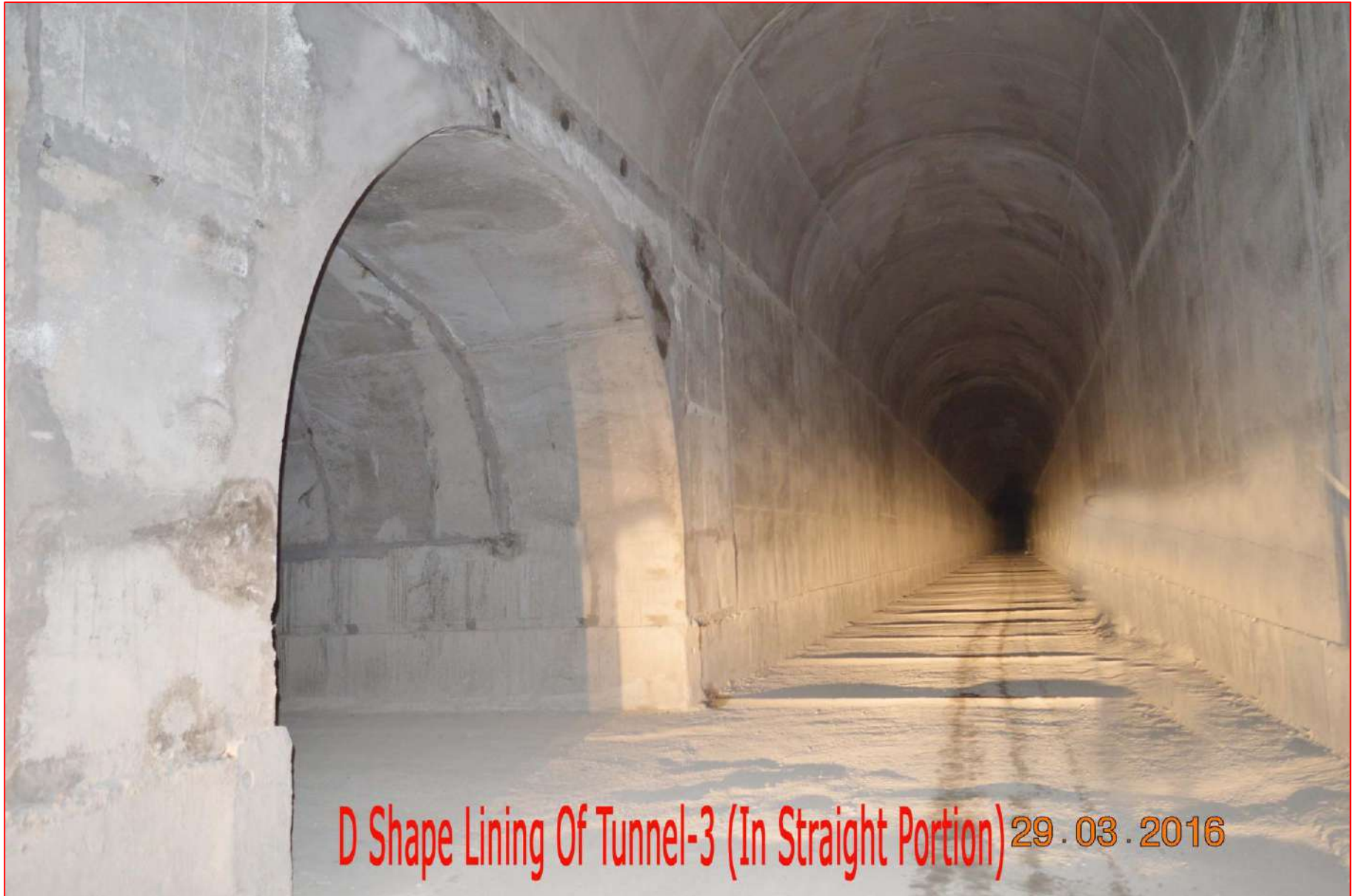
Tunnel T2



16-06-2016

T-3 P-2 lining



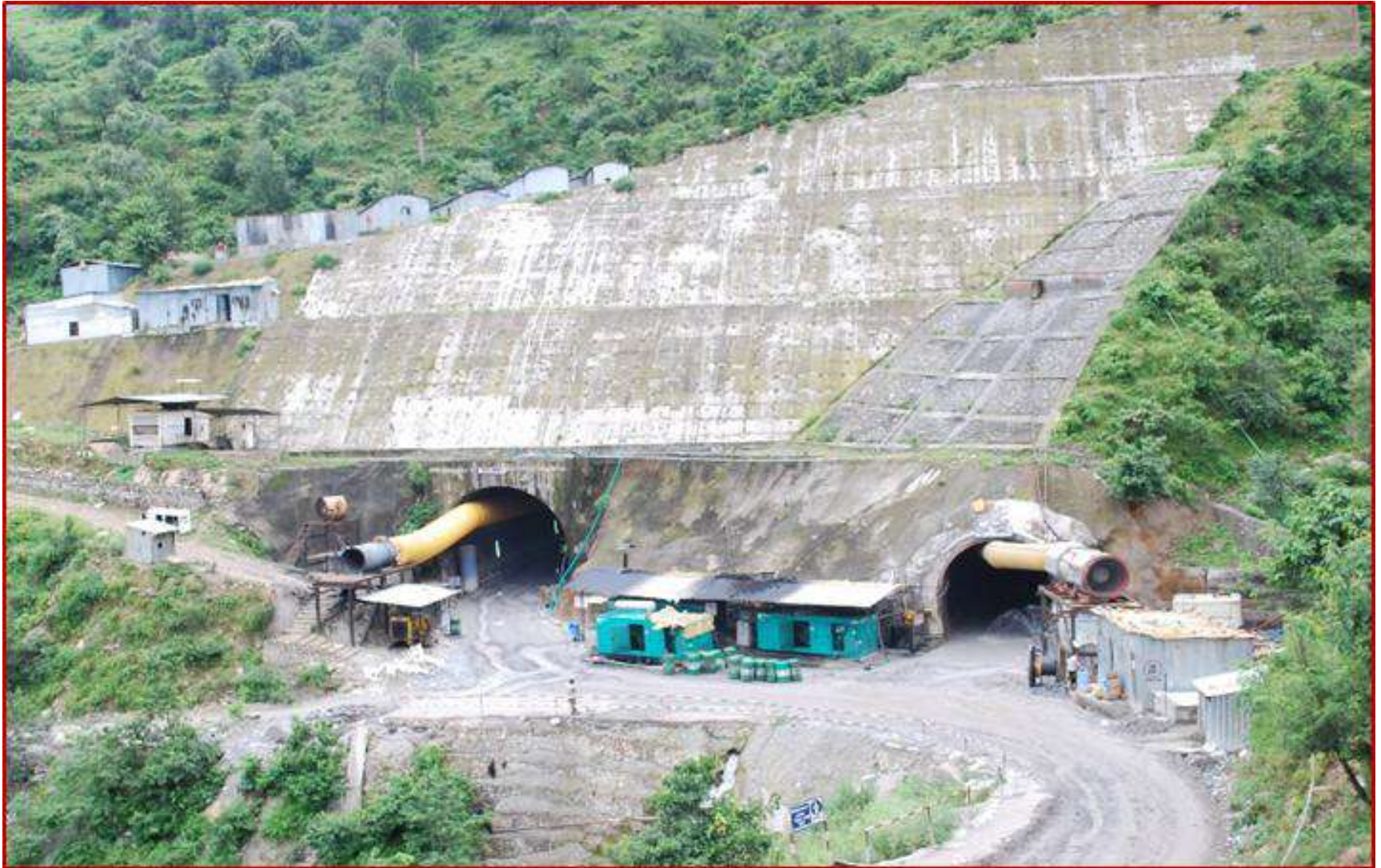


D Shape Lining Of Tunnel-3 (In Straight Portion) 29.03.2016

Tunnel T5 P1 End



Tunnel T5 End



Tunnel T5



Tunnel T5



Tunnel T5



Tunnel T6

24.03.2016 11:37



Tunnel T6 adit



Tunnel T9



Tunnel T10



Tunnel T11



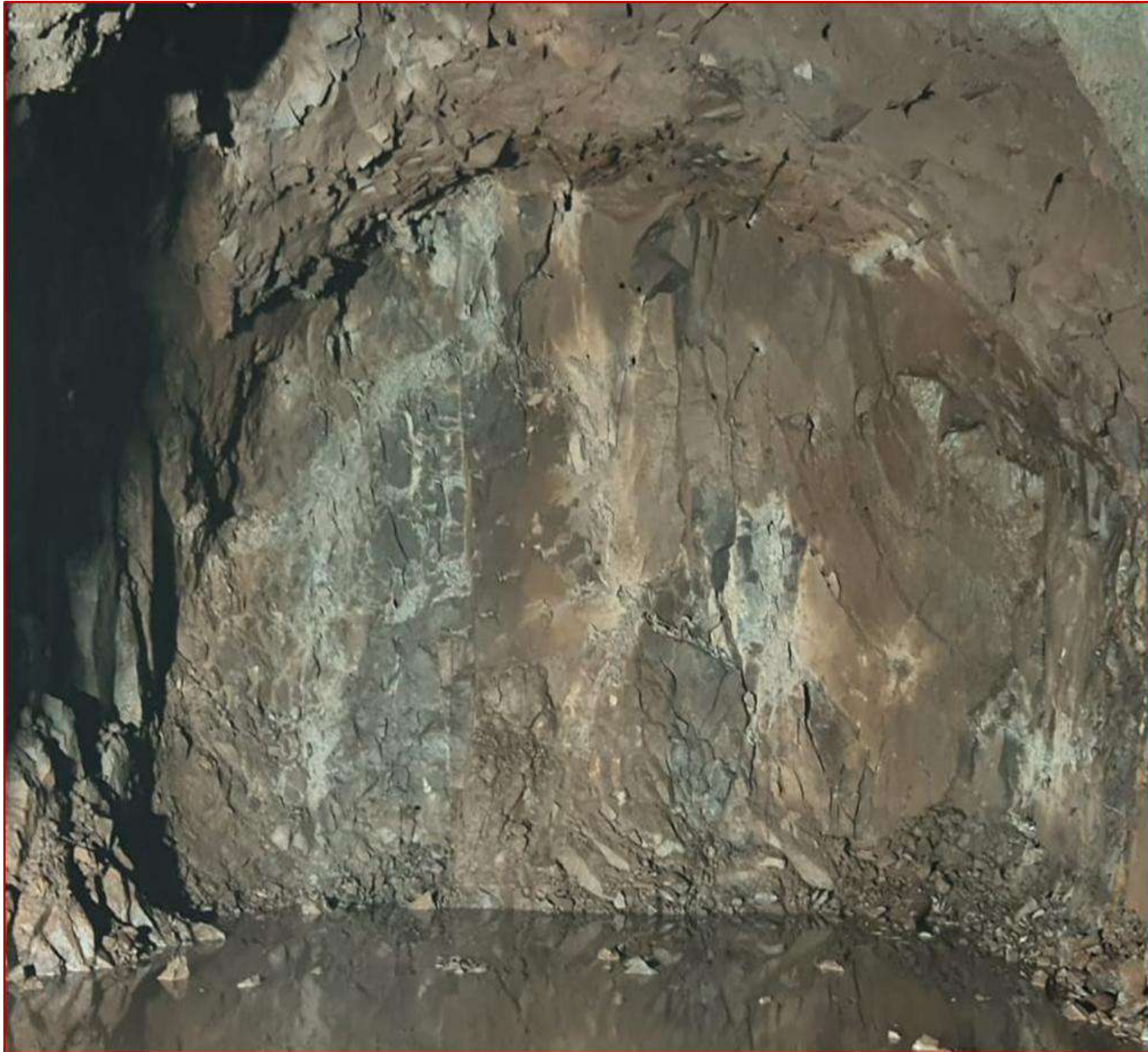
Tunnel T13 – Main Tunnel



Tunnel T13 – Main Tunnel



Tunnel T13 (Escape Tunnel)



Tunnel T13 (Escape Tunnel)



Tunnel T13 (Escape Tunnel)



02.08.2022 16:55

Tunnel T13 Adit



Tunnel T13 Adit



Tunnel T13 (Main Tunnel -Wider)



Tunnel T13 MT

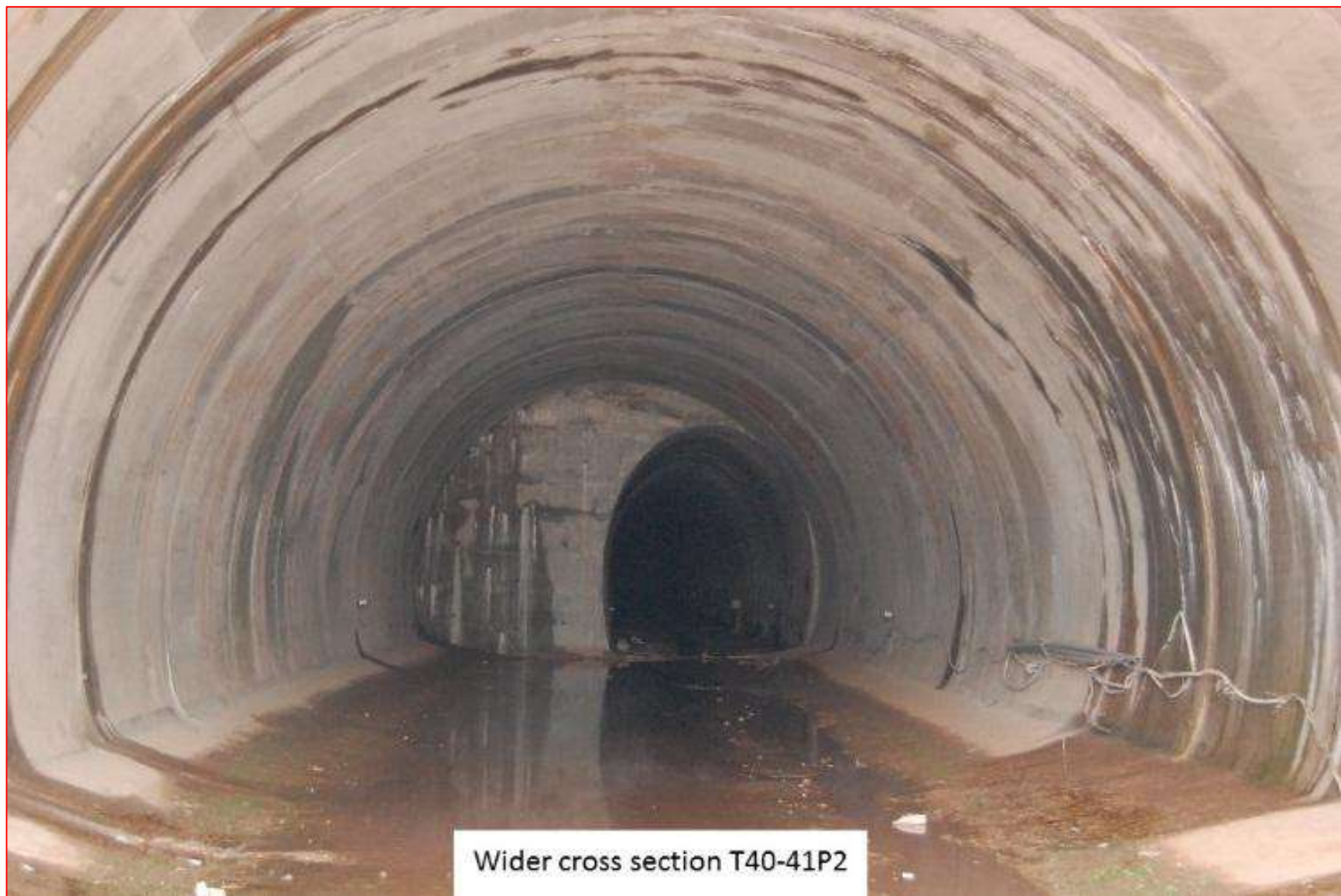


Tunnel T14 (Main Tunnel)



Tunnel T14 (Escape Tunnel)





A photograph showing the interior of a large, arched tunnel. The walls are made of rough, textured concrete or stone, showing signs of wear and discoloration. The floor is a smooth, light-colored surface. In the distance, a series of bright lights illuminate the tunnel, creating a strong perspective. A coiled cable or hose is visible on the right side of the tunnel.

Tunnel T42-43



Tunnel T44-45



Tunnel T46



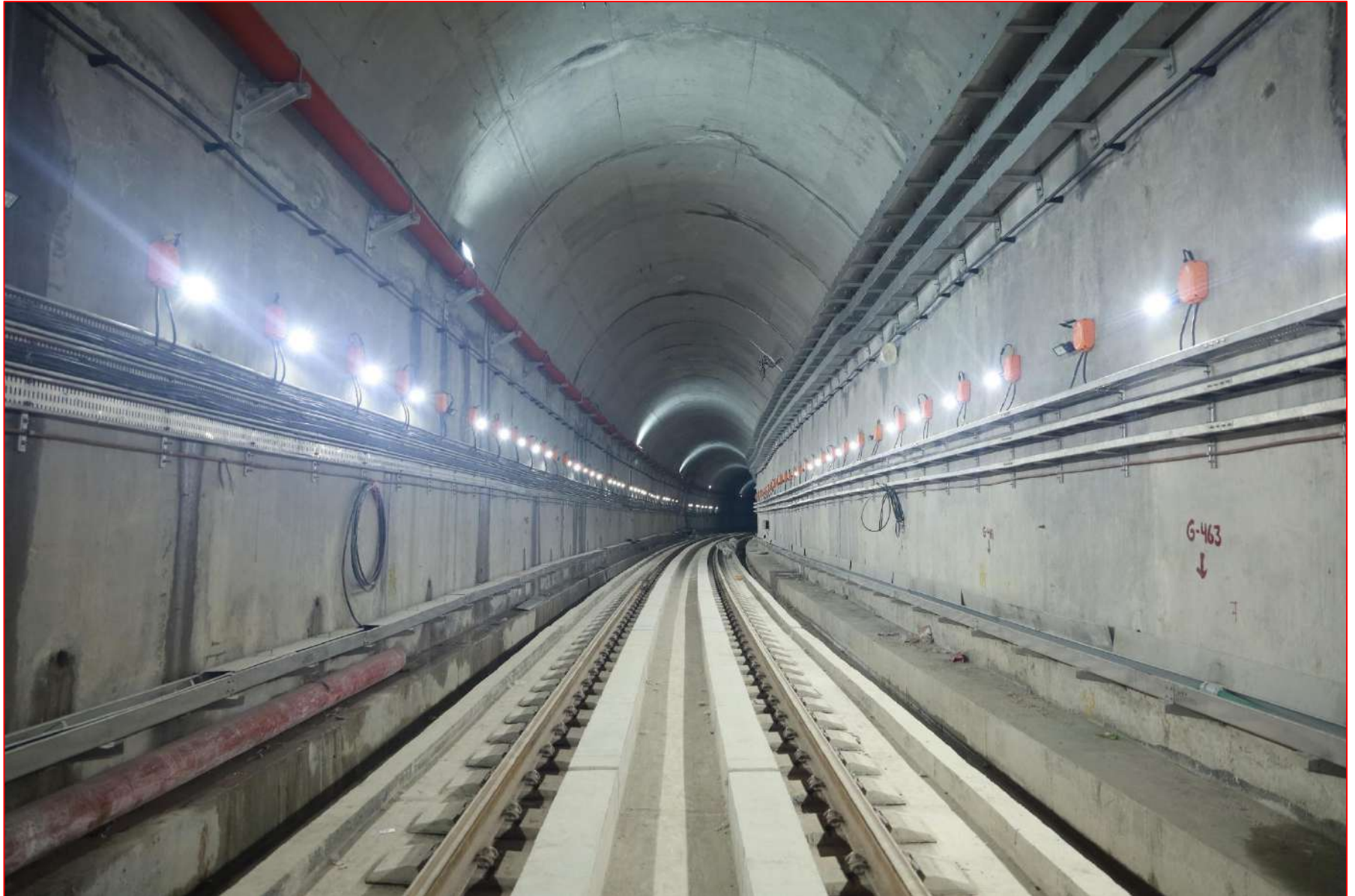
Tunnel T47

BLT WORKS

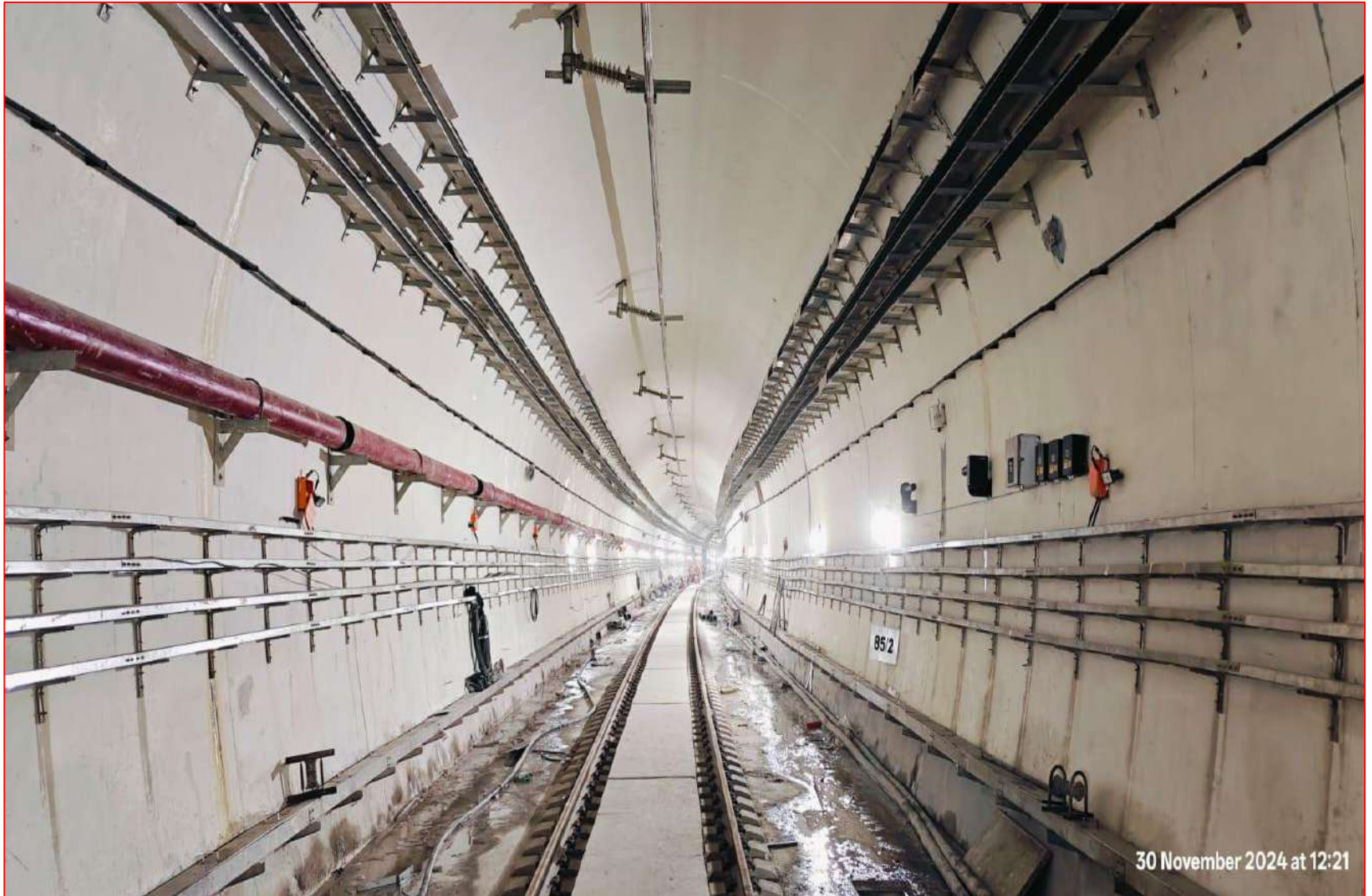
TUNNEL NO. 8/9



TUNNEL NO. 10



TUNNEL NO. 1



TUNNEL NO. 2



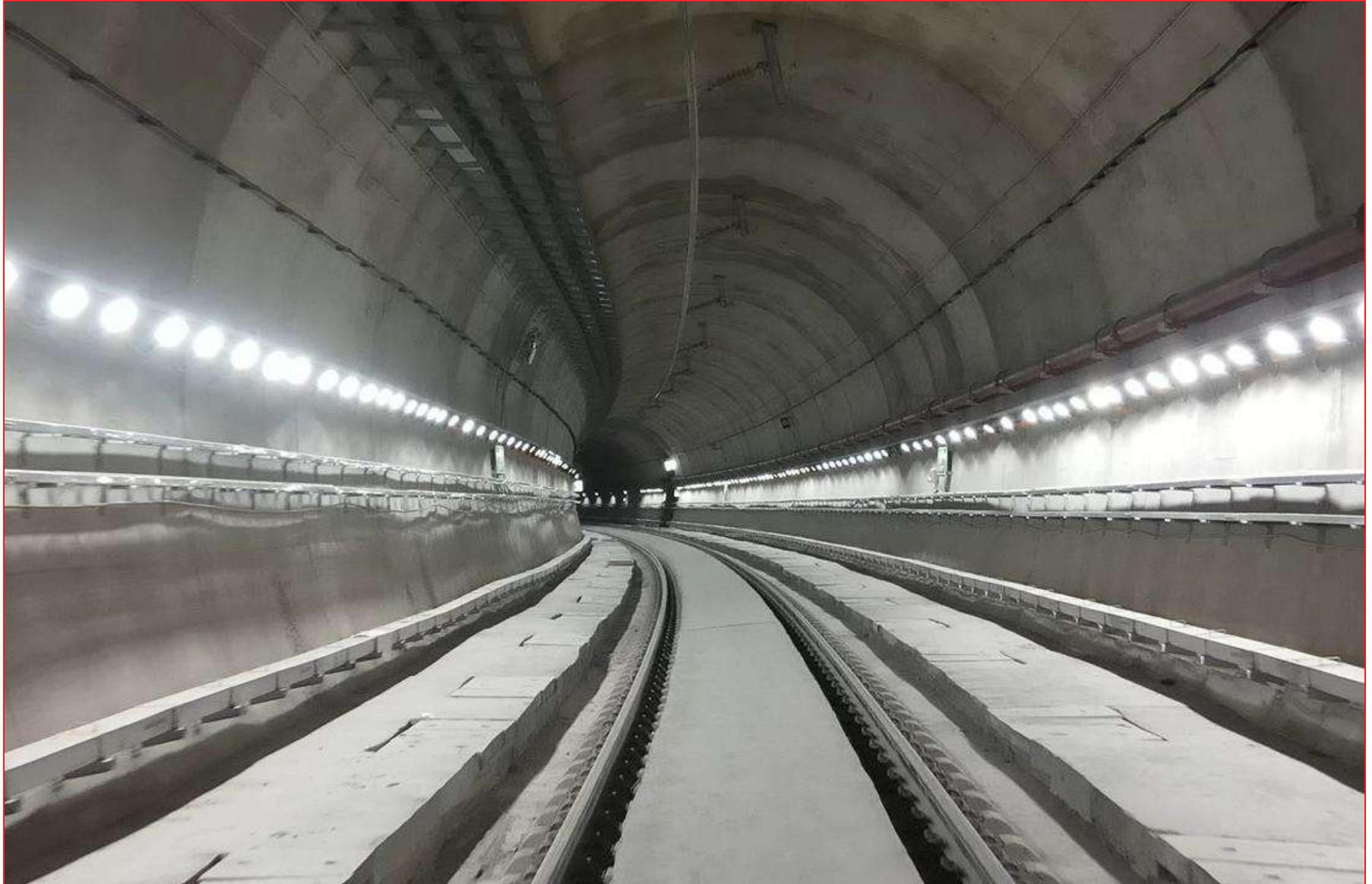
TUNNEL NO. 3



Tunnel No. 6



TUNNEL NO. 9





Tunnel T46

STATIONS

REASI STATION



BAKKAL STATION



DUGGA STATION



SAWALKOTE STATION



SANGALDAN STATION



SCHOOL BUILDING AT SANGALDAN



Opening of Sangaldan Section



Opening of Katra-Sangaldan Section of USBRL Project by Hon'ble PM on 06.06.2025

