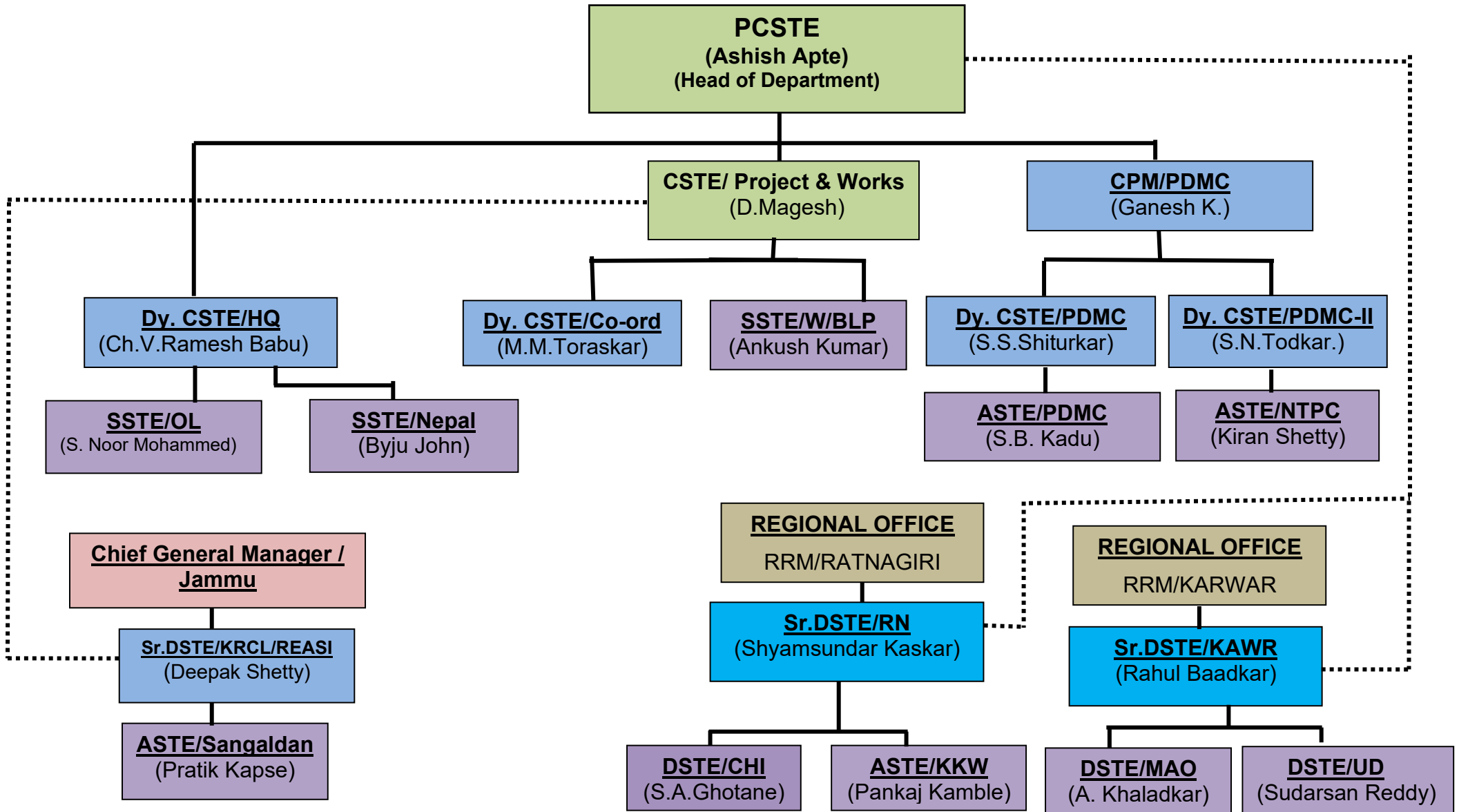


SIGNAL & TELECOMMUNICATION DEPARTMENT



PCSTE: Principal Chief Signal & Telecommunication Engineer.

CSTE (P&W): Chief Signal & Telecommunication Engineer/ (Project & Works)

CPM (PDMC): Chief Project Manager (Project Development Monitoring Cell)

Dy. CSTE (PDMC): Deputy Chief Signal & Telecommunication Engineer(Project Development Monitoring Cell)

Dy. CSTE (Co-Ord.): Deputy Chief Signal & Telecommunication Engineer (Co-Ordination)

Dy. CSTE (HQ): Deputy Chief Signal & Telecommunication Engineer (Headquarter)

Dy. CSTE/Project-I: Deputy Chief Signal & Telecommunication Engineer/ Project.

Sr. DSTE/Reasi :Senior Divisional Signal & Telecommunication Engineer/ Reasi

Sr. DSTE : Senior Divisional Signal & Telecommunication Engineer

DSTE : Divisional Signal & Telecommunication Engineer

SSTE : Senior Signal & Telecommunication Engineer

ASTE : Assistant Signal & Telecommunication Engineer