



KONKAN RAILWAY CORPORATION LIMITED

PHOTO GALLERY

**Udhampur-Srinagar-Baramulla-Rail Link
Project**

Updated on 30-04-2026

ROADS

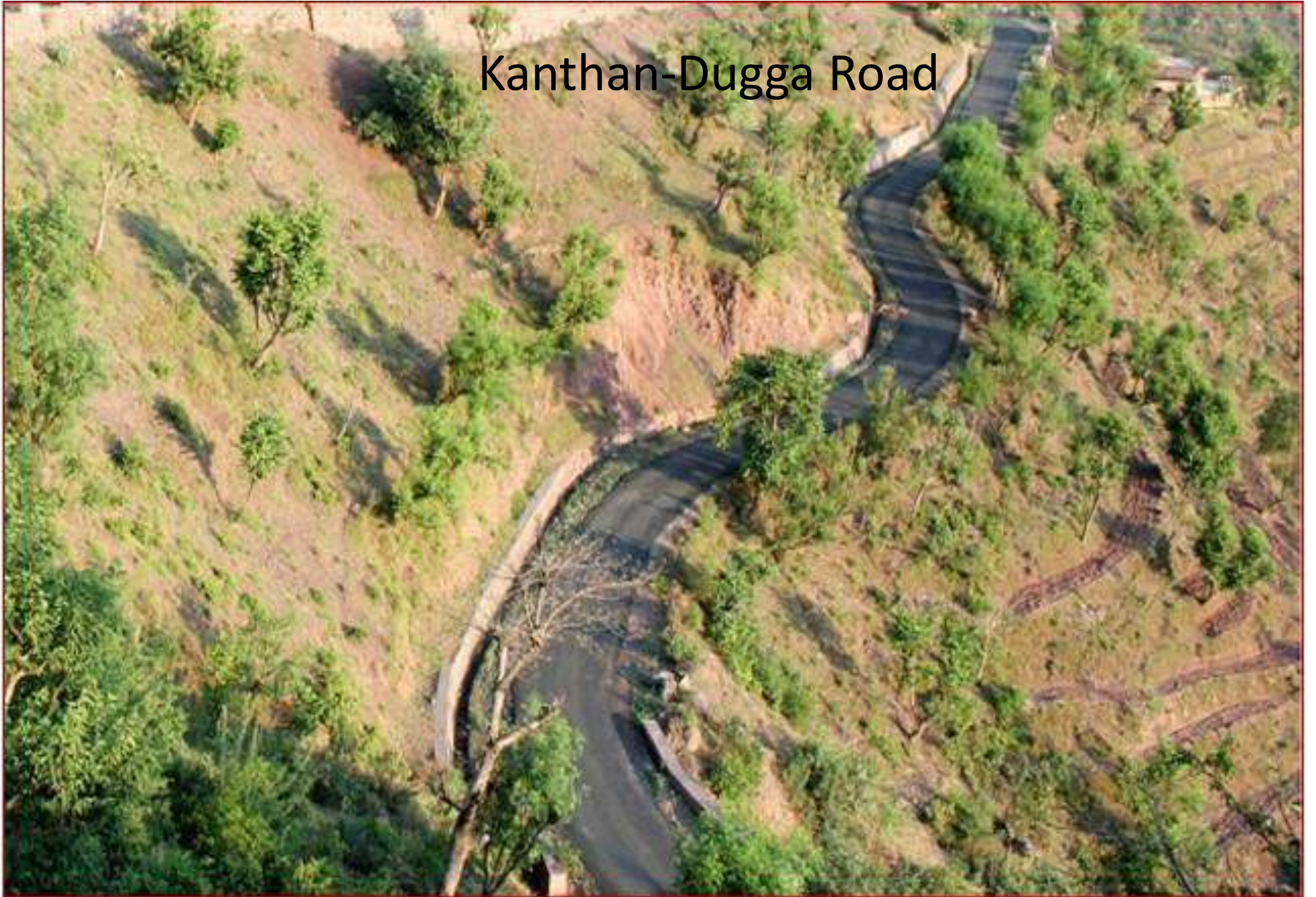
Road at Judda Village



Road at Sangaldan



Kanthan-Dugga Road





[Ind-Adit T14 Approach Road](#)



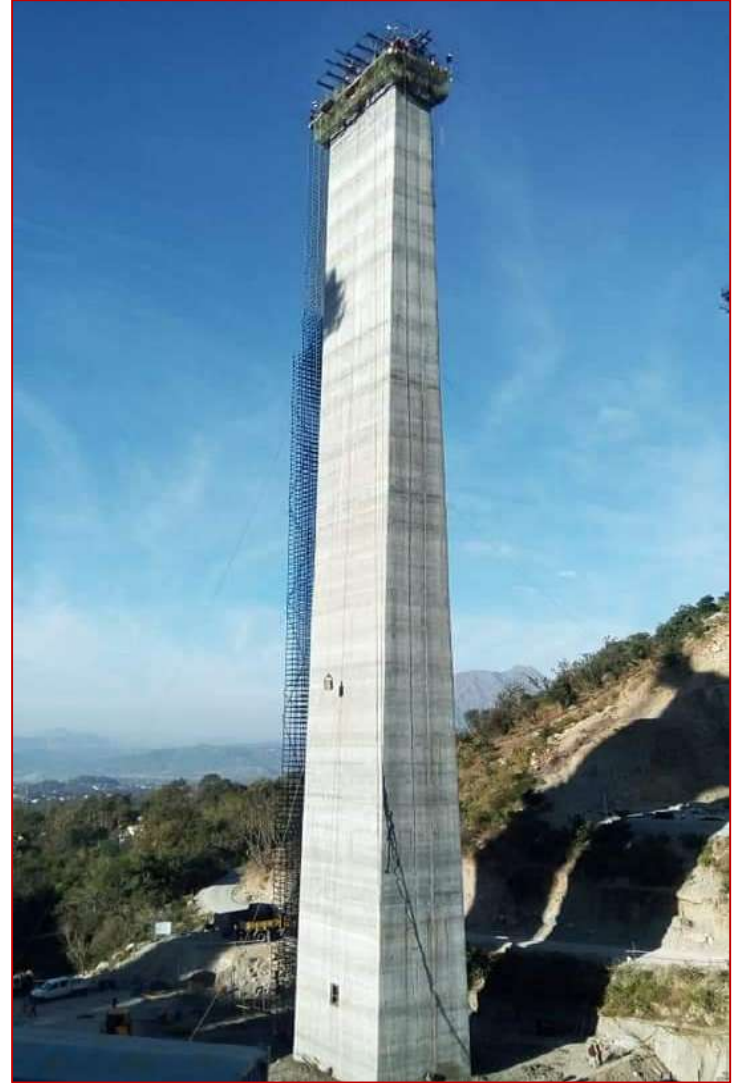
Ind-Adit T14 Approach Road

BRIDGE 39

A view of Bridge 39

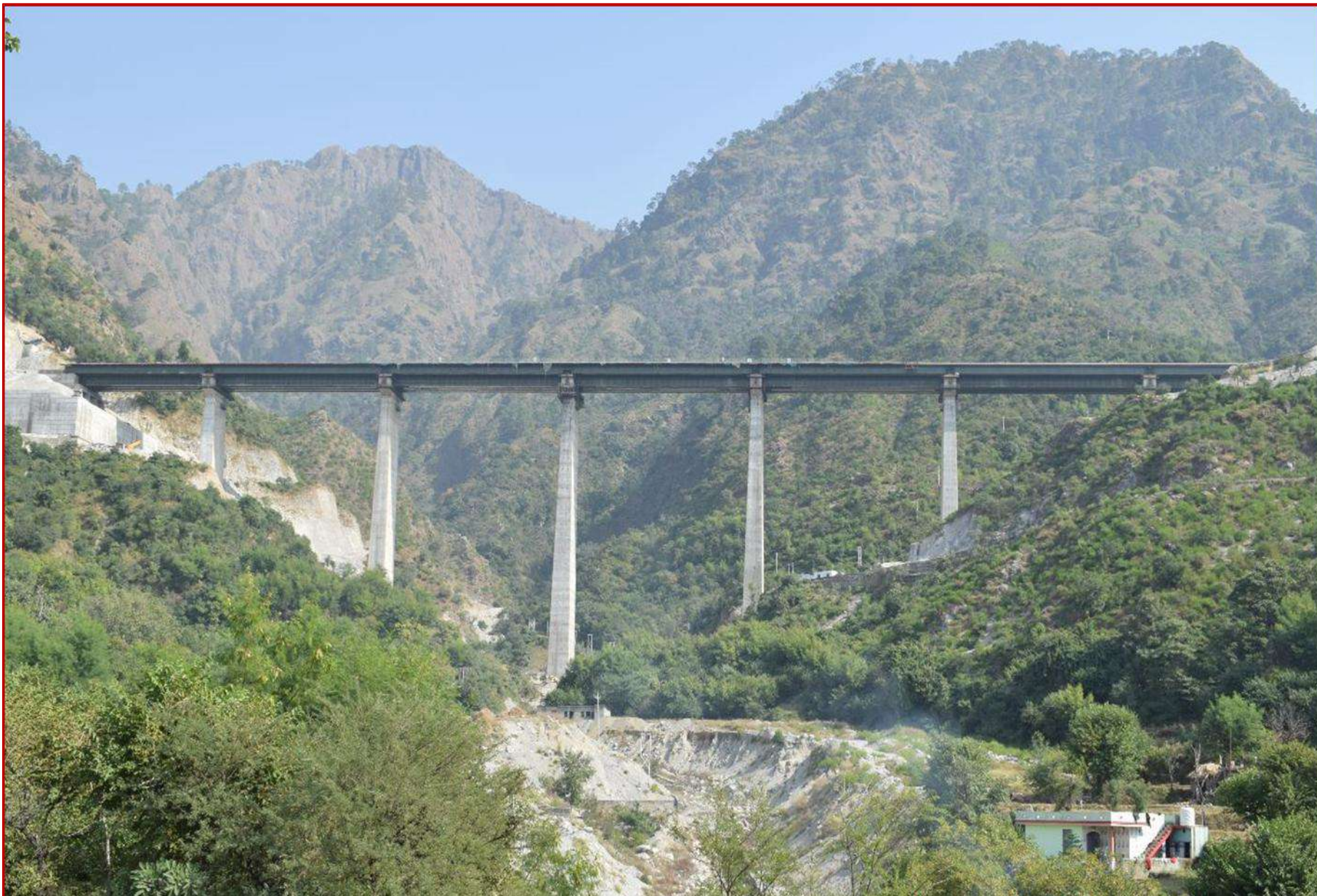


Bridge 39



The pier no. P-5 of Br.no.39 is 91 m tall.

Bridge 39



Bridge 39



Bridge 39



Bridge 39

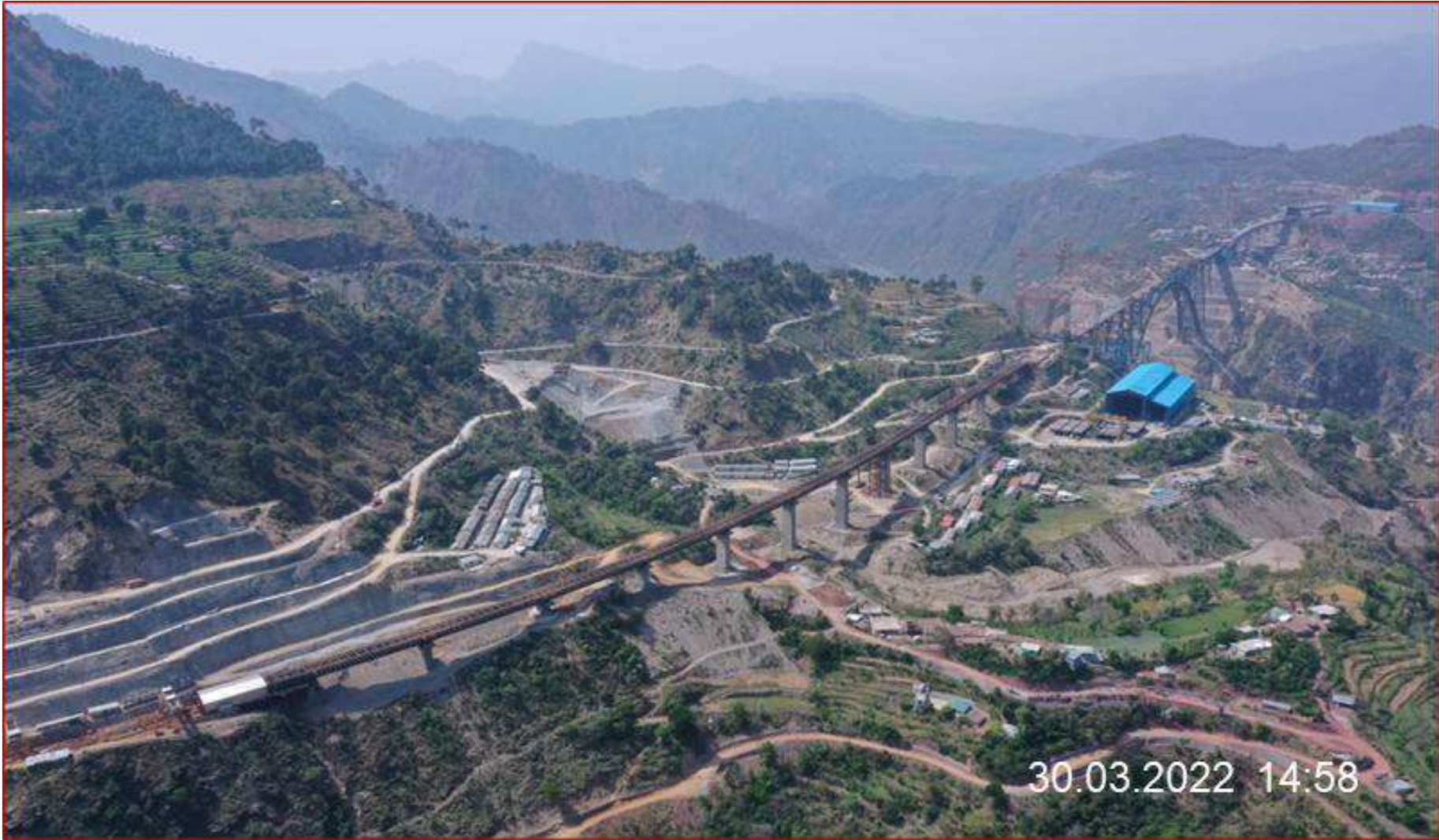


BRIDGE 43

A view of Bridge 43



Bridge 43



30.03.2022 14:58

Bridge 43



Bridge 43



Bridge 43



Bridge 60



CHENAB BRIDGE

❖ An Artistic view of Proposed Chenab Bridge



131 m

72.5 m

359 m

324 m



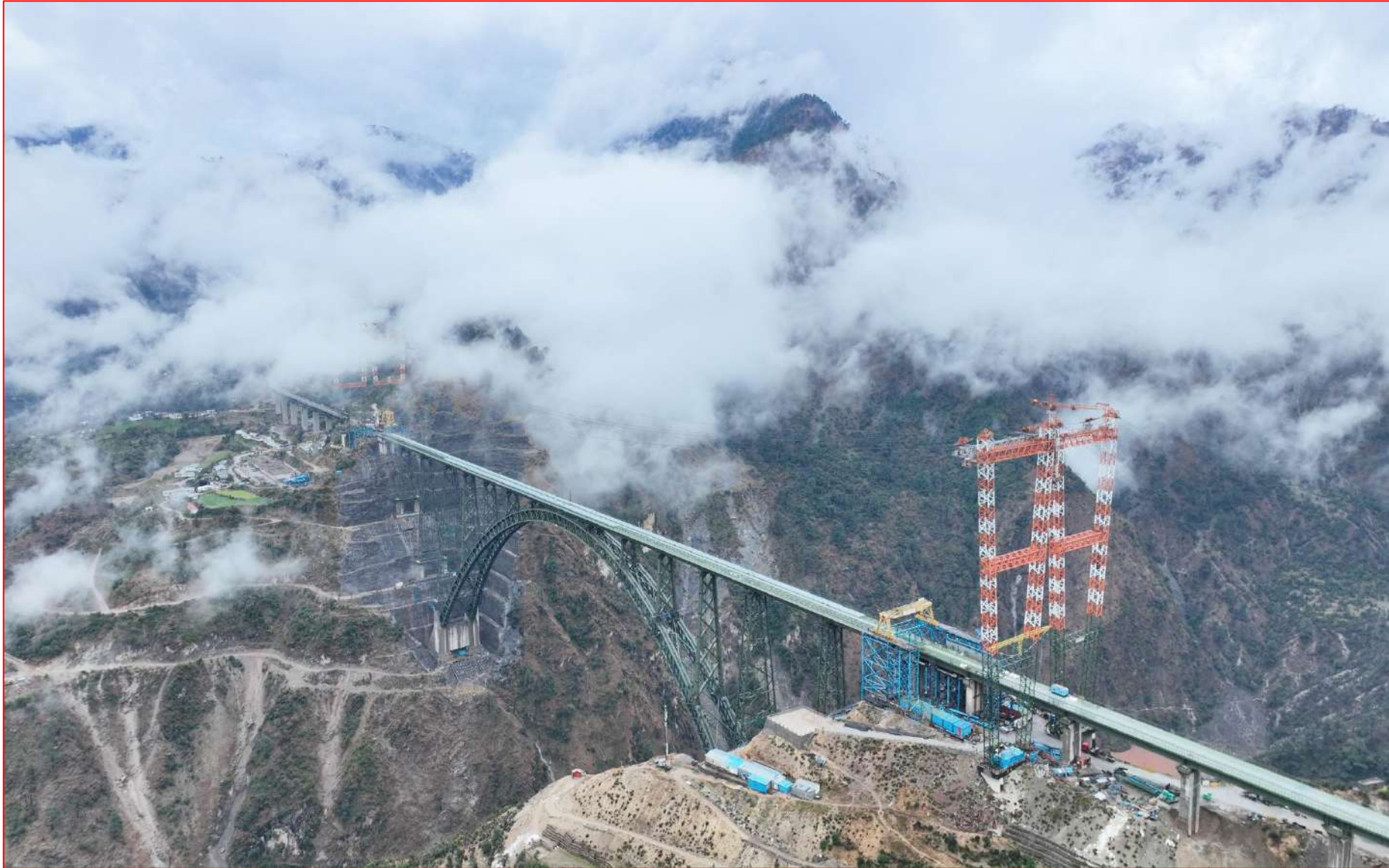
A VIEW OF CHENAB BRIDGE



A VIEW OF CHENAB BRIDGE



A VIEW OF CHENAB BRIDGE



A VIEW OF CHENAB BRIDGE



A VIEW OF CHENAB BRIDGE



A VIEW OF CHENAB BRIDGE



A VIEW OF CHENAB BRIDGE



A VIEW OF CHENAB BRIDGE



A VIEW OF CHENAB BRIDGE



Chenab Bridge



Bird's View Of Chenab Bridge



A View Of Chenab Bridge

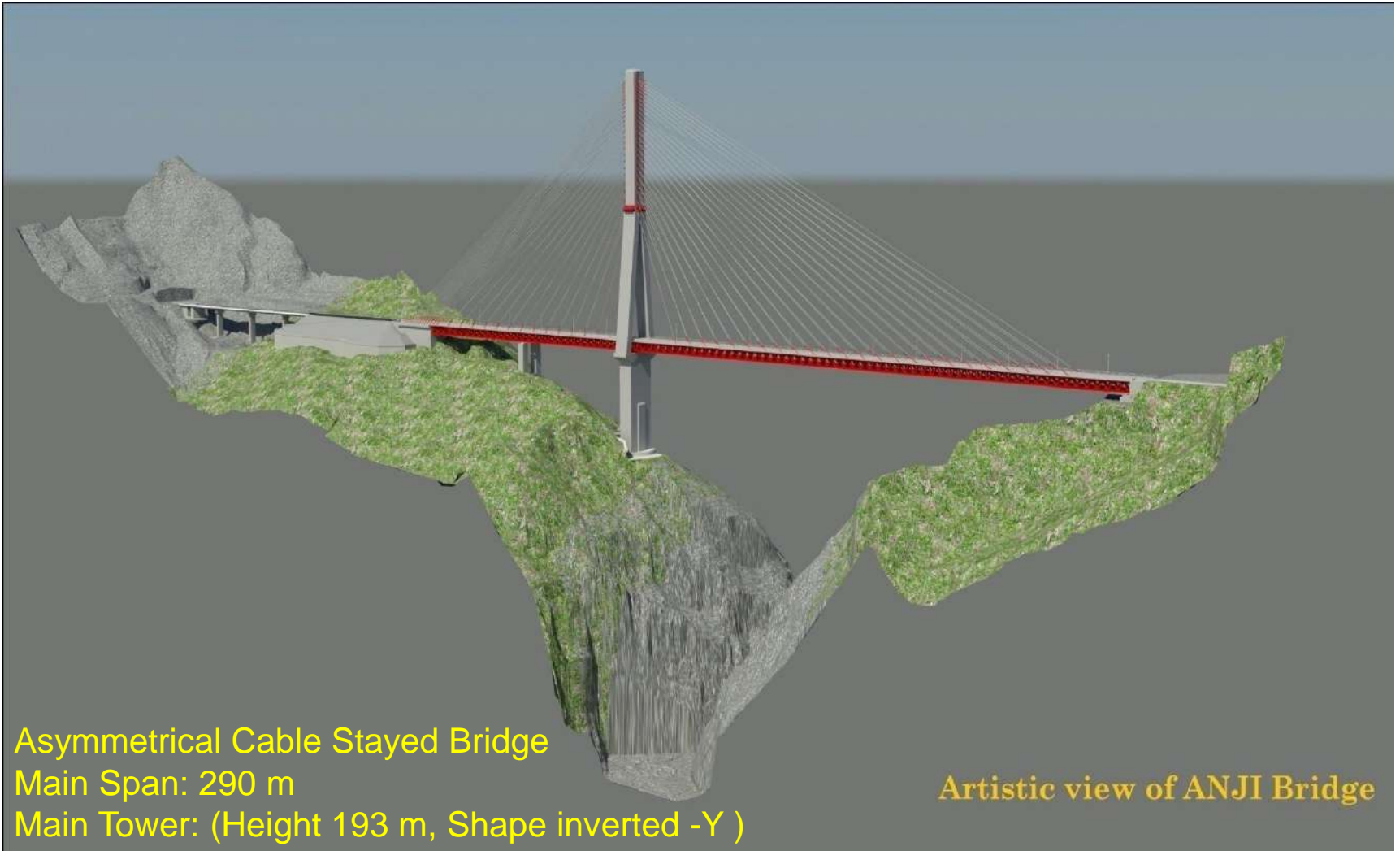


A View Of Chenab Bridge



ANJI BRIDGE

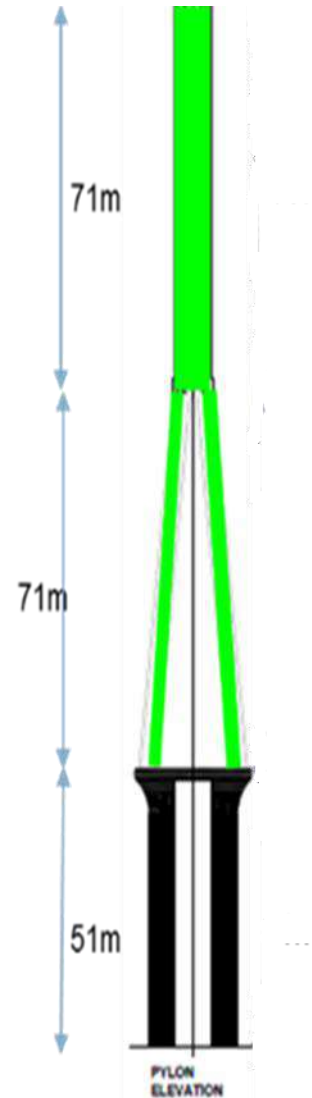
Artistic View of Anji Bridge



Asymmetrical Cable Stayed Bridge
Main Span: 290 m
Main Tower: (Height 193 m, Shape inverted -Y)

Artistic view of ANJI Bridge

Anji Bridge- Current Status Of Main Pylon-MP1



Anji Bridge



15.08.2022 10:57

Anji Bridge



Anji Bridge



Anji Bridge



Anji Bridge



Anji Bridge



Anji Bridge



Anji Bridge



Anji Bridge



Anji Bridge



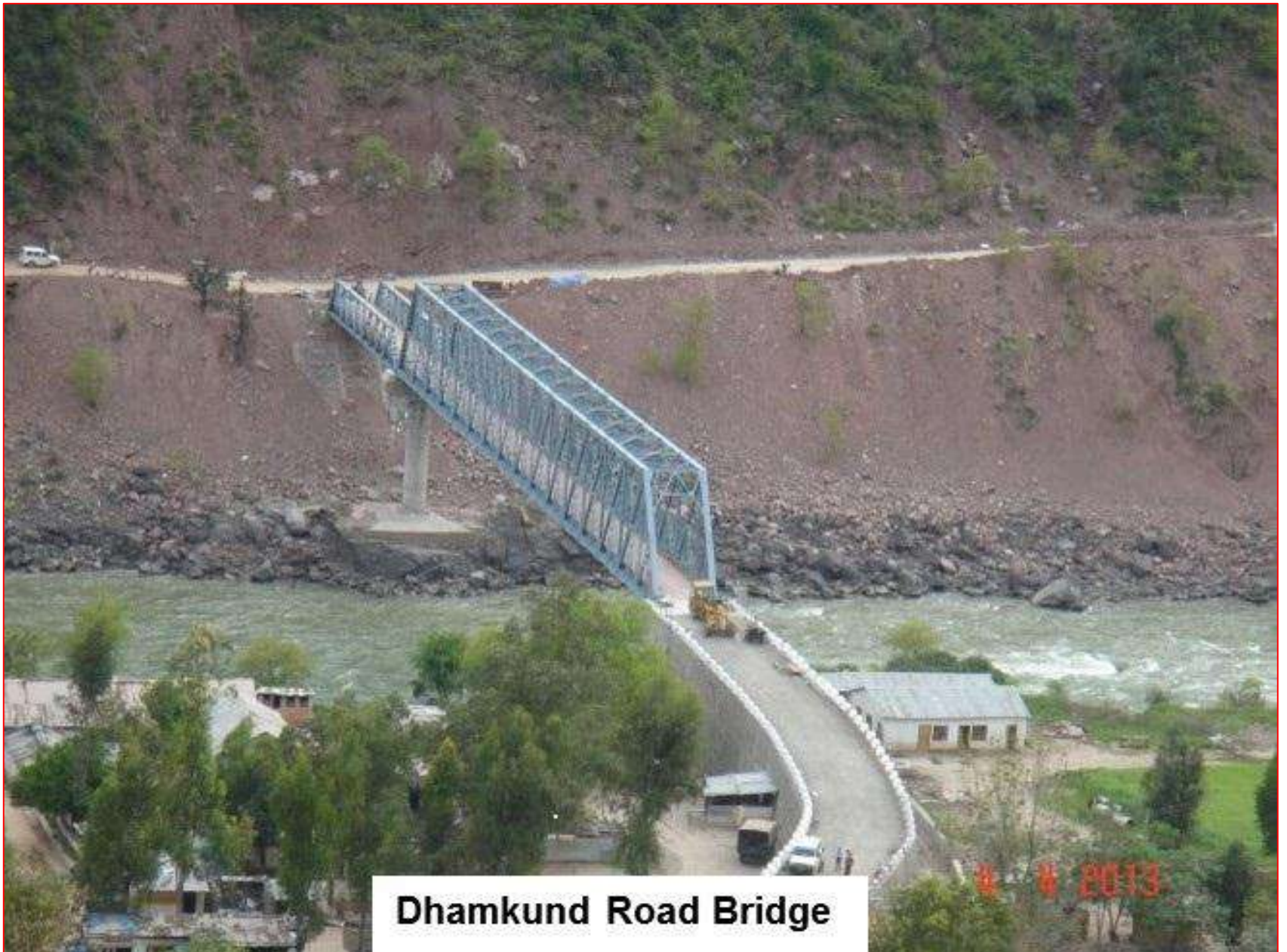
Anji Bridge



Anji Bridge

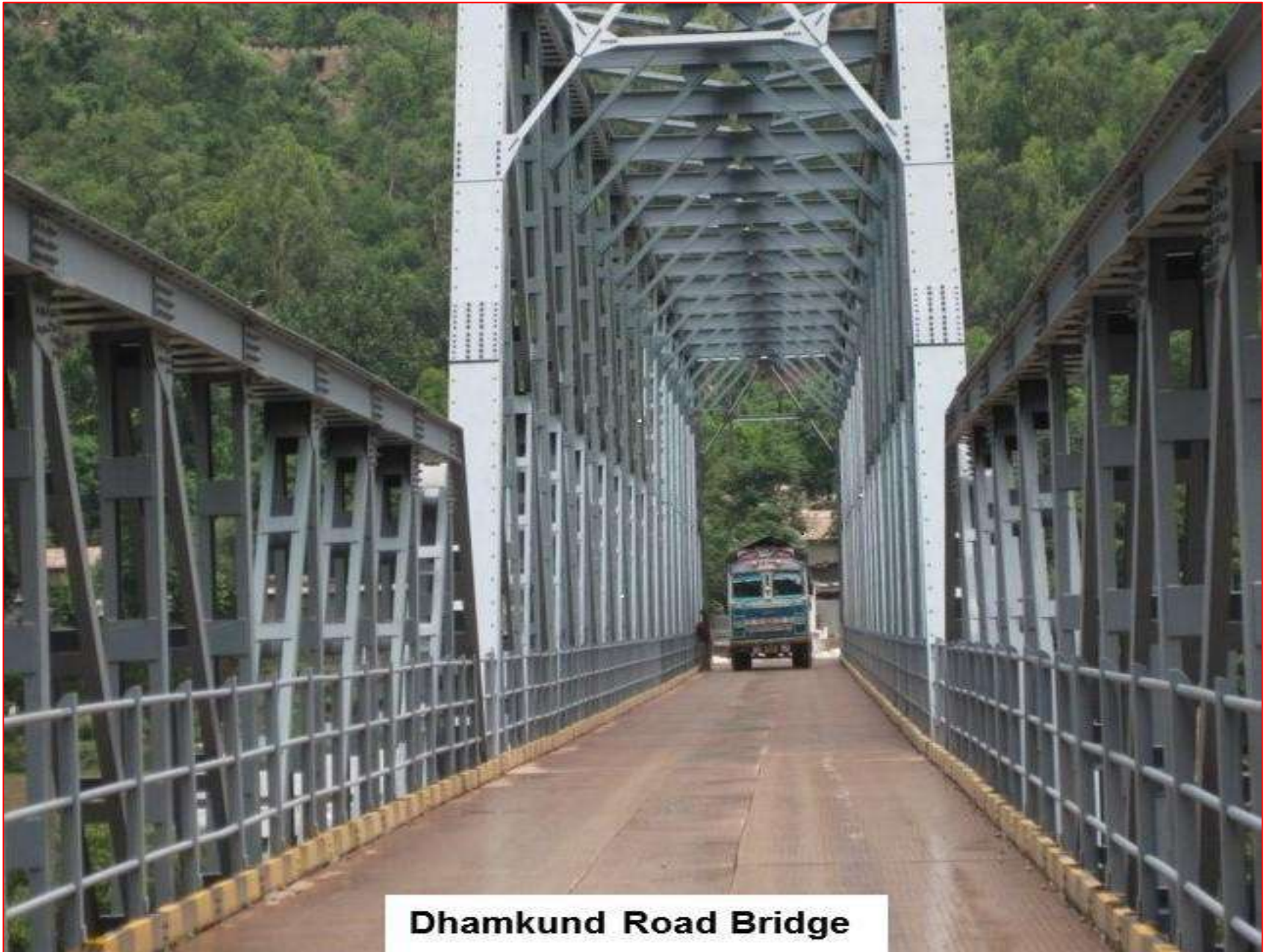


DHAMKUND BRIDGE



Dhamkund Road Bridge

11/11/2013



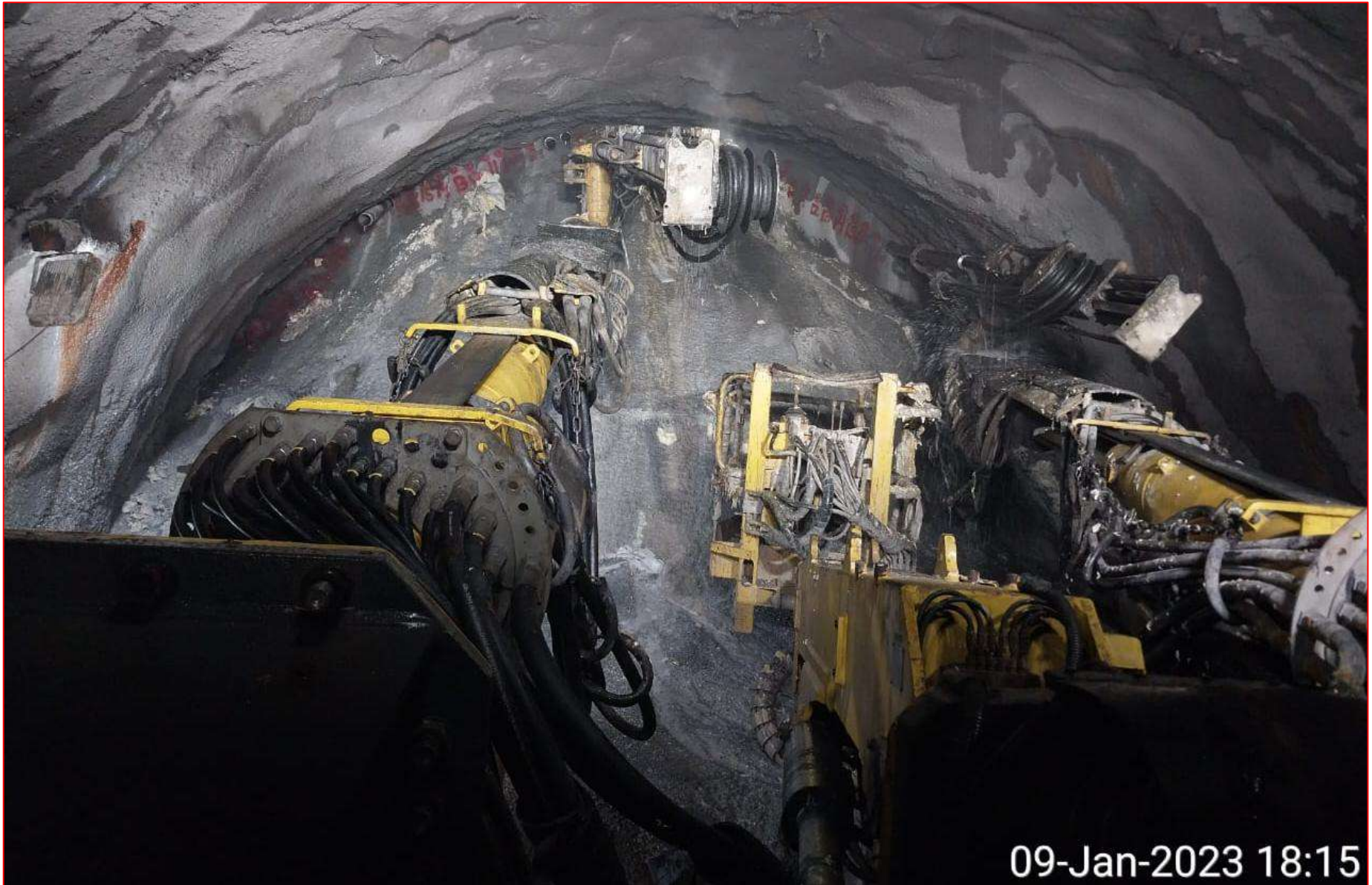
Dhamkund Road Bridge

TUNNELS

Tunnel T1 – P1 End



Tunnel T1 – P1 End



09-Jan-2023 18:15

Tunnel T1 – P2 End



Tunnel T1 – P2 End



Tunnel T2



Tunnel T2 (Main Tunnel) - Pipe roofing



Tunnel T2



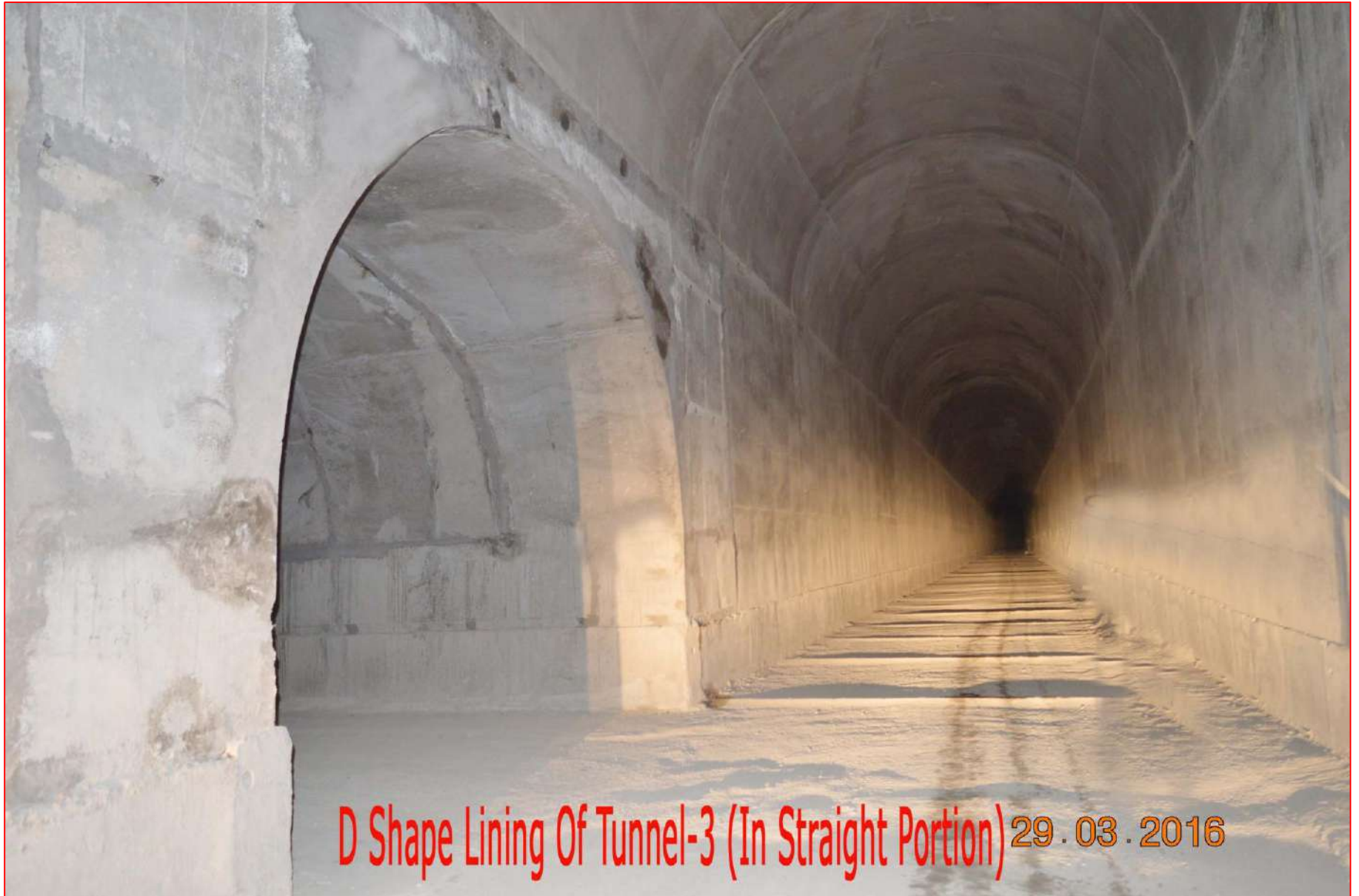
Tunnel T2



16-06-2016

T-3 P-2 lining



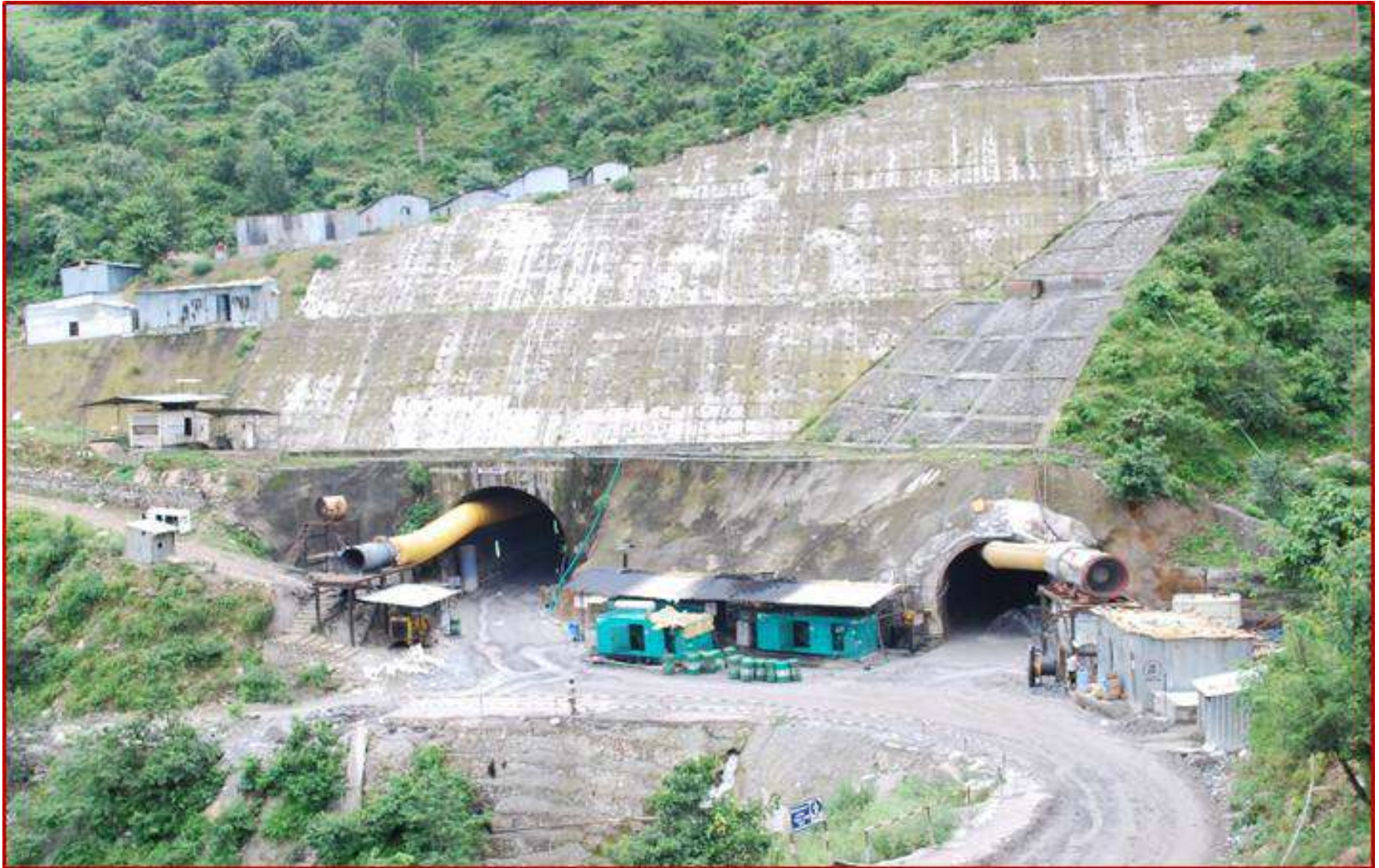


D Shape Lining Of Tunnel-3 (In Straight Portion) 29.03.2016

Tunnel T5 P1 End



Tunnel T5 End



Tunnel T5



Tunnel T5



Tunnel T5



Tunnel T6



24.03.2016 11:37

Tunnel T6 adit



Tunnel T9



Tunnel T10



Tunnel T11



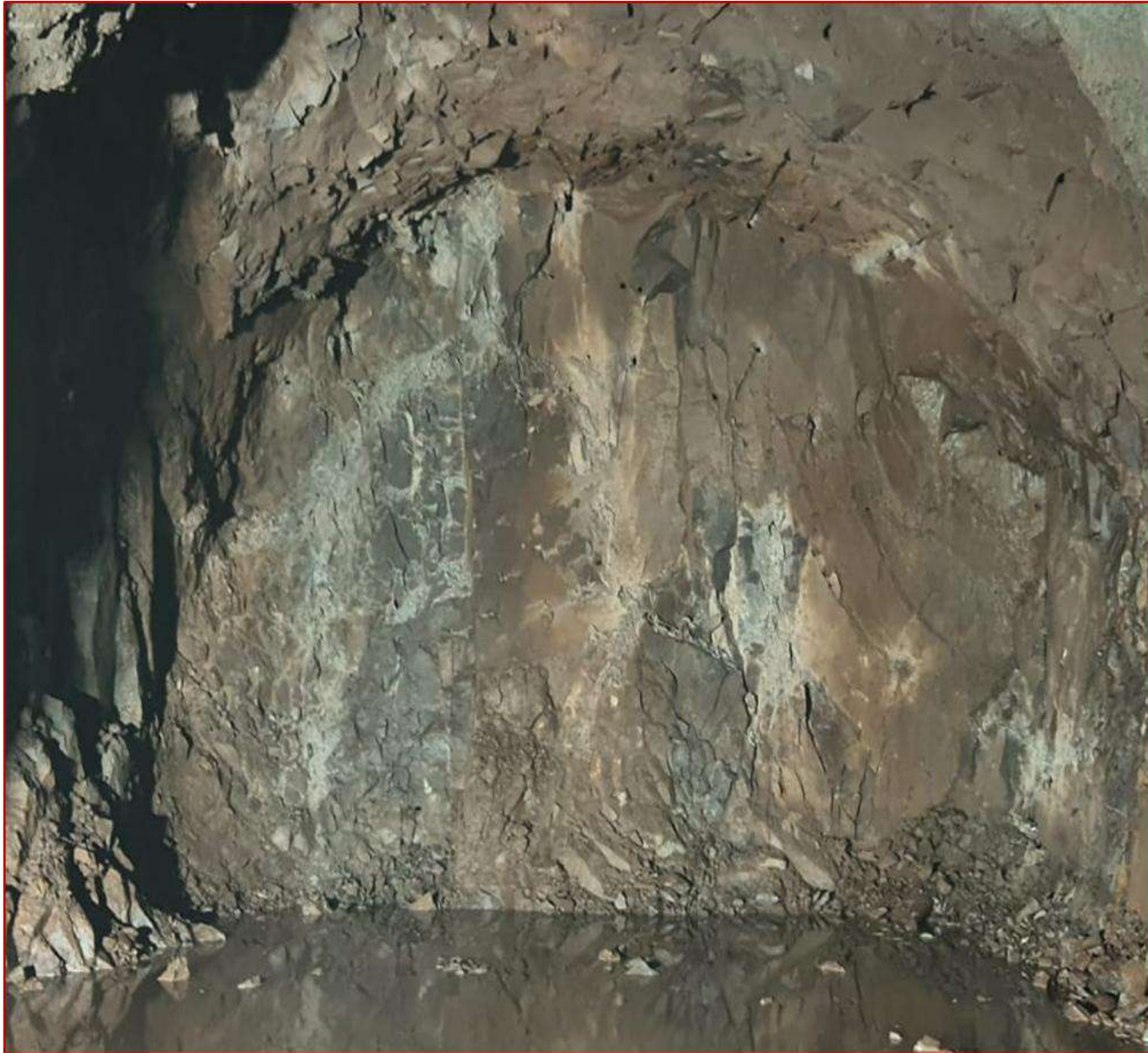
Tunnel T13 – Main Tunnel



Tunnel T13 – Main Tunnel



Tunnel T13 (Escape Tunnel)



Tunnel T13 (Escape Tunnel)



Tunnel T13 (Escape Tunnel)



Tunnel T13 Adit



Tunnel T13 Adit



Tunnel T13 (Main Tunnel -Wider)



Tunnel T13 MT

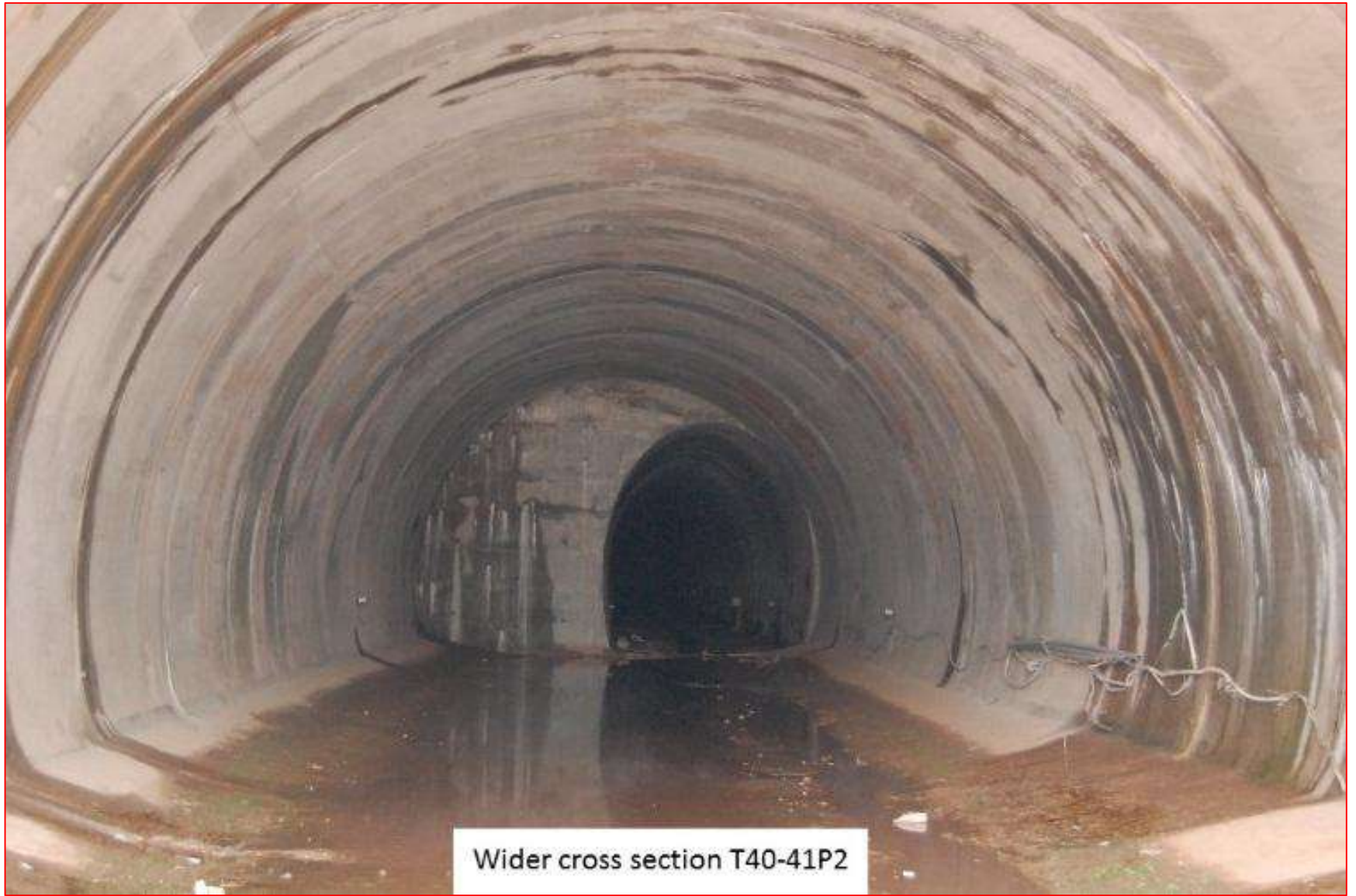


Tunnel T14 (Main Tunnel)



Tunnel T14 (Escape Tunnel)





Wider cross section T40-41P2



Tunnel T42-43



Tunnel T44-45



Tunnel T46



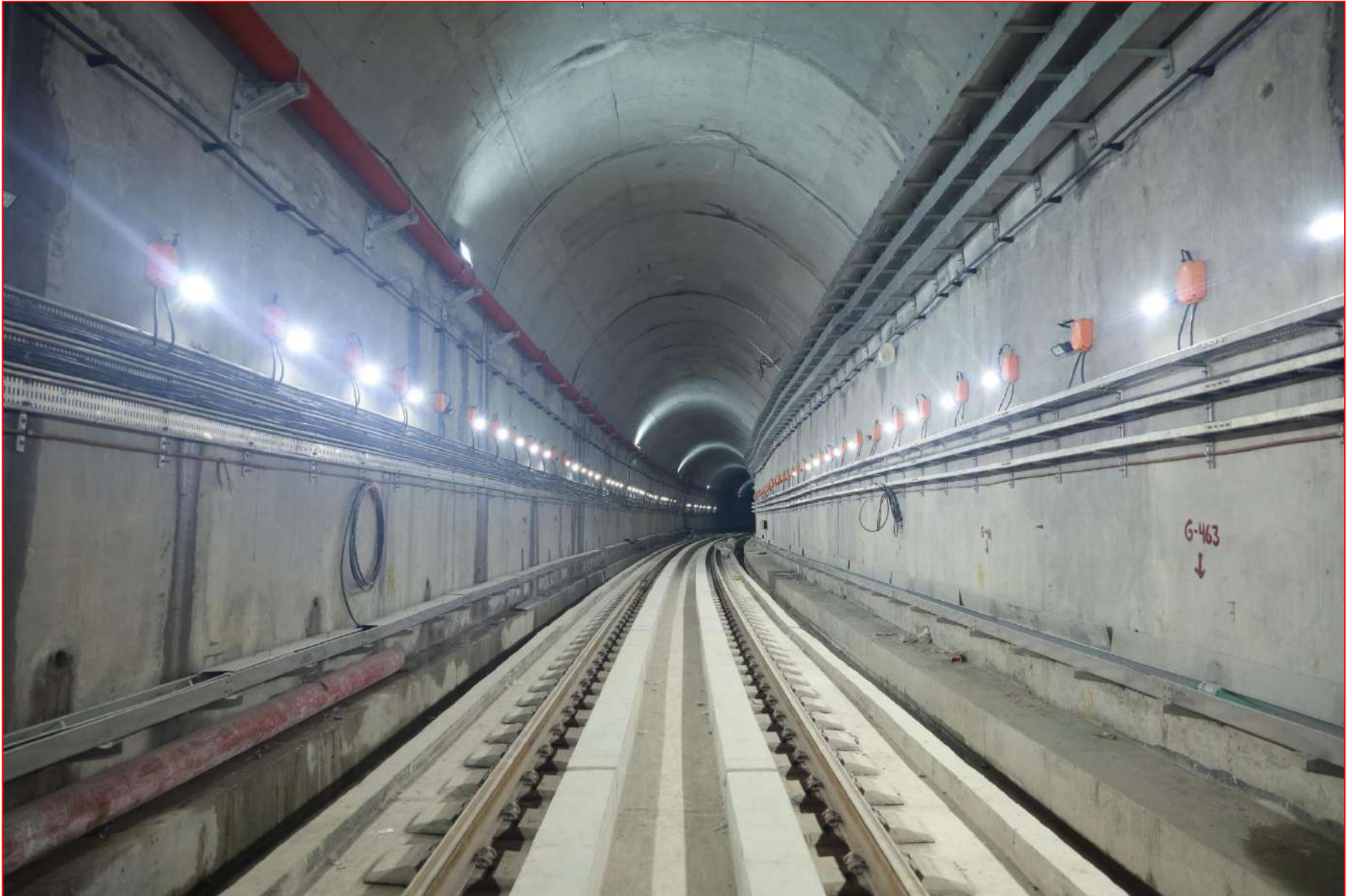
Tunnel T47

BLT WORKS

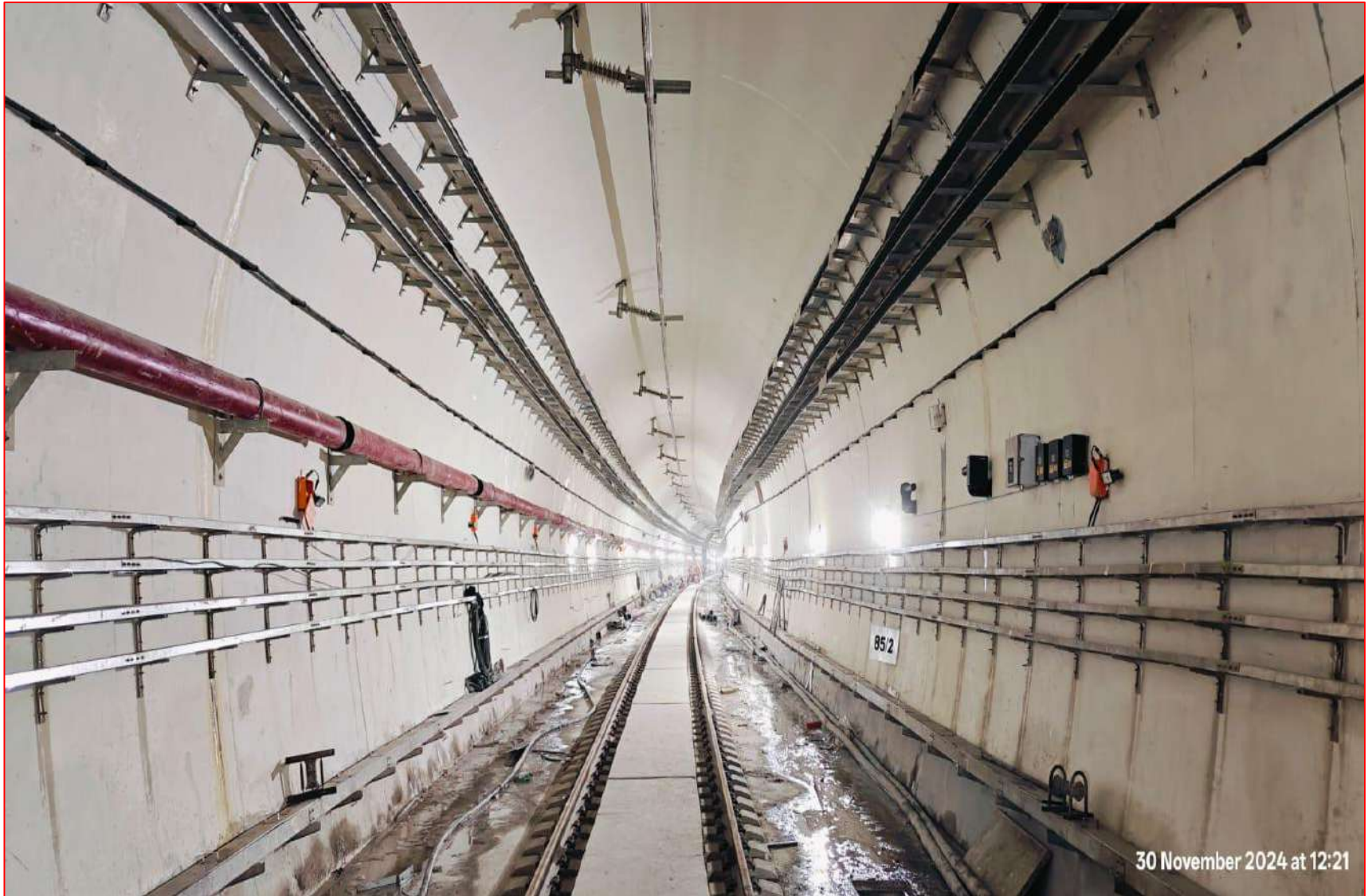
TUNNEL NO. 8/9



TUNNEL NO. 10



TUNNEL NO. 1



30 November 2024 at 12:21

TUNNEL NO. 2



TUNNEL NO. 3



Tunnel No. 6



TUNNEL NO. 9





Tunnel T46

STATIONS

REASI STATION



BAKKAL STATION



DUGGA STATION



SAWALKOTE STATION



SANGALDAN STATION



SCHOOL BUILDING AT SANGALDAN



Opening of Sangaldan Section



Opening of Katra-Sangaldan Section of USBRL Project by Hon'ble PM on 06.06.2025

