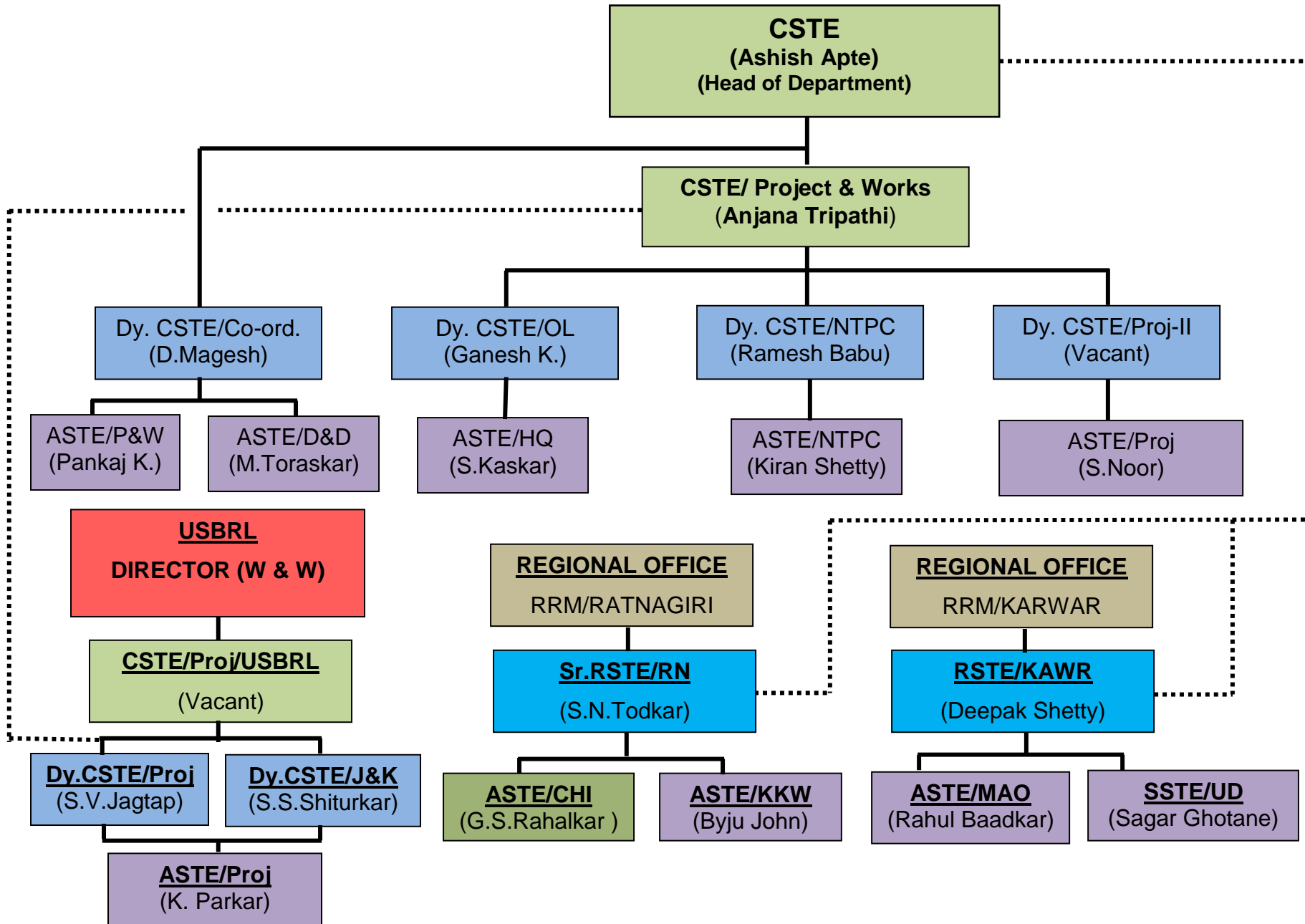


SIGNAL & TELECOMMUNICATION DEPARTMENT



CSTE: Chief Signal & Telecommunication Engineer.
CSTE (P&W): Chief Signal & Telecommunication Engineer/ (Project & Works)
Dy. CSTE (Co-ord.): Deputy Chief Signal & Telecommunication Engineer (Co-ordination)
Dy. CSTE (OL): Deputy Chief Signal & Telecommunication Engineer (Open Line)
Dy. CSTE/NTPC : Deputy Chief Signal & Telecommunication Engineer/ NTPC.
Dy. CSTE/Proj-II : Deputy Chief Signal & Telecommunication Engineer/ Project-II
Dy. CSTE/Proj : Deputy Chief Signal & Telecommunication Engineer/ Project
Dy. CSTE/J&K : Deputy Chief Signal & Telecommunication Engineer/ J&K
Sr. RSTE: Senior Regional Signal & Telecommunication Engineer.
RSTE : Regional Signal & Telecommunication Engineer