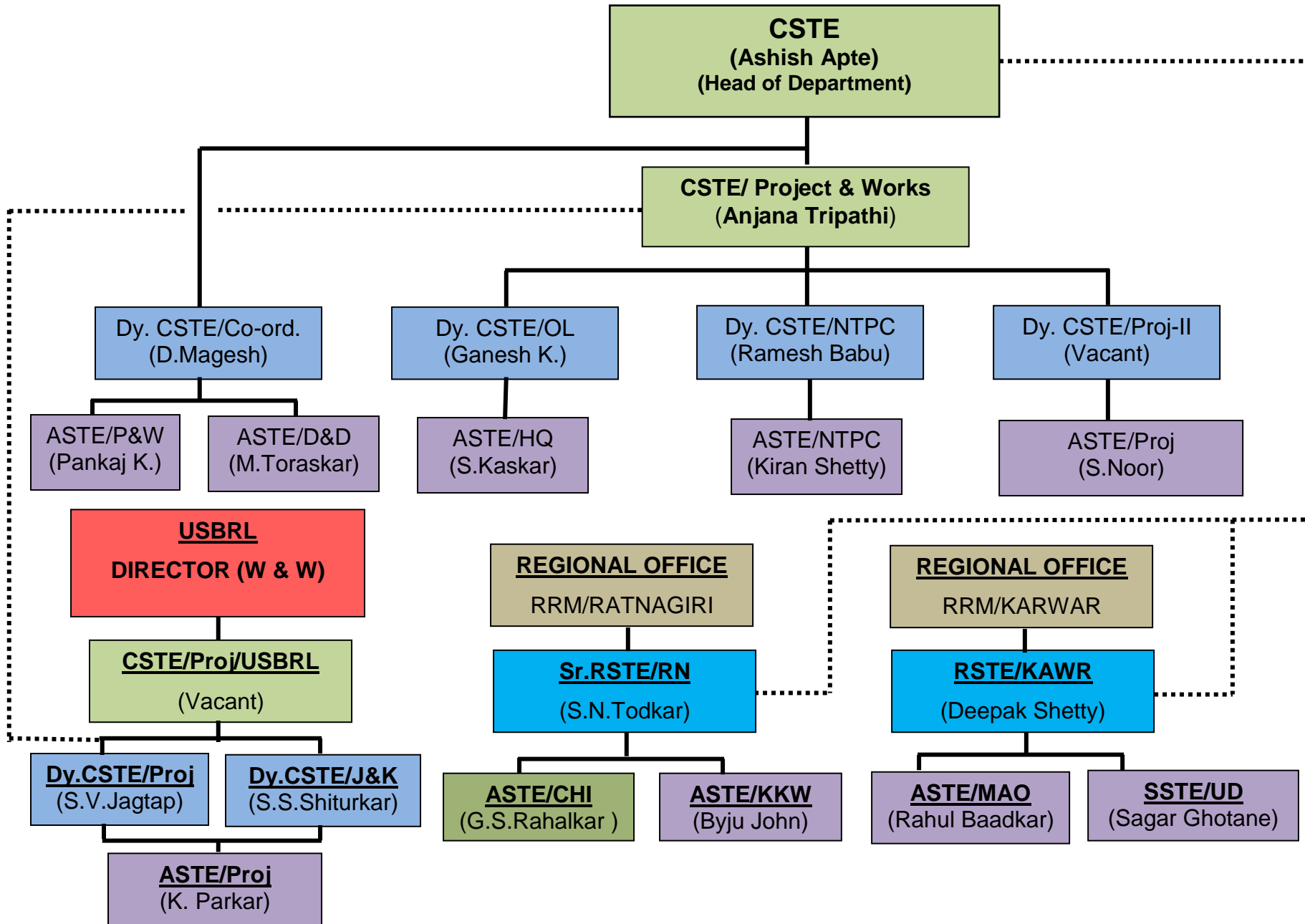


# SIGNAL & TELECOMMUNICATION DEPARTMENT



CSTE: Chief Signal & Telecommunication Engineer.  
CSTE (P&W): Chief Signal & Telecommunication Engineer/ (Project & Works)  
Dy. CSTE (Co-ord.): Deputy Chief Signal & Telecommunication Engineer (Co-ordination)  
Dy. CSTE (OL): Deputy Chief Signal & Telecommunication Engineer (Open Line)  
Dy. CSTE/NTPC : Deputy Chief Signal & Telecommunication Engineer/ NTPC.  
Dy. CSTE/Proj-II : Deputy Chief Signal & Telecommunication Engineer/ Project-II  
Dy. CSTE/Proj : Deputy Chief Signal & Telecommunication Engineer/ Project  
Dy. CSTE/J&K : Deputy Chief Signal & Telecommunication Engineer/ J&K  
Sr. RSTE: Senior Regional Signal & Telecommunication Engineer.  
RSTE : Regional Signal & Telecommunication Engineer