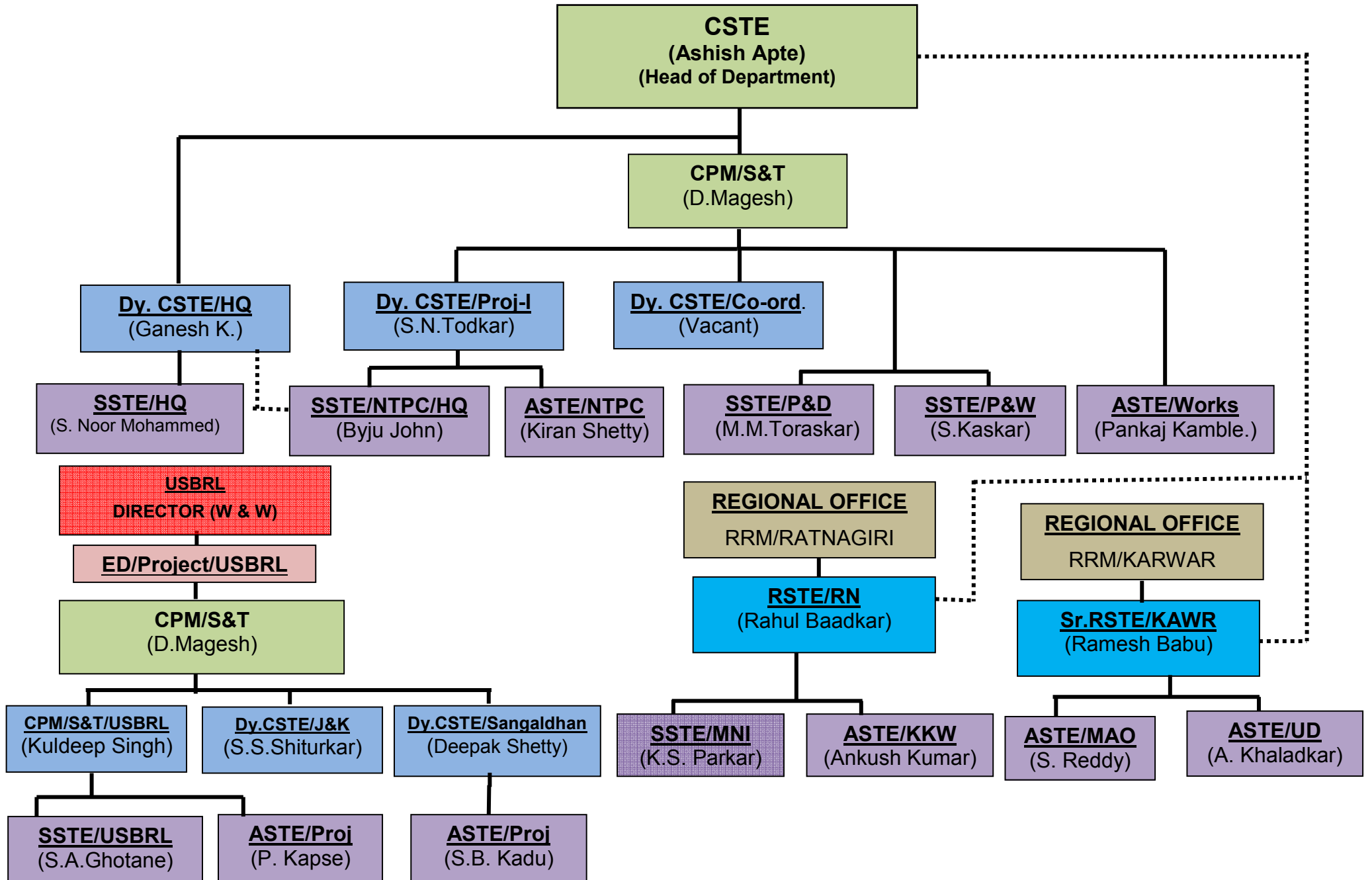


# SIGNAL & TELECOMMUNICATION DEPARTMENT



CSTE: Chief Signal & Telecommunication Engineer.

CPM/S&T : Chief Project Manager/ Signal & Telecommunication

Dy. CSTE (Co-Ord.): Deputy Chief Signal & Telecommunication Engineer (Co-Ordination)

Dy. CSTE (HQ): Deputy Chief Signal & Telecommunication Engineer (Headquarter)

Dy. CSTE/Project-I: Deputy Chief Signal & Telecommunication Engineer/ Project.

CPM/S&T/USBRL : Chief Project Manager/ Signal & Telecommunication/USBRL

Dy. CSTE/J&K : Deputy Chief Signal & Telecommunication Engineer/ J&K

Dy. CSTE/Sangaldhan : Deputy Chief Signal & Telecommunication Engineer/ Sangaldhan

Sr. RSTE : Senior Regional Signal & Telecommunication Engineer

RSTE : Regional Signal & Telecommunication Engineer